

# Solihull Local Safeguarding Children Partnership Newsletter

## May 2022

Welcome to the **LSCP** newsletter.  
Do contact us if you have any queries.



## Inside this Months Issue

1. National review into the murders of Arthur Labinjo-Hughes and Star Hobson
2. JTAI & Improvement Plan
3. Independent Scrutineer's Report 2021/22
4. Changes to the LSCP Training Charging Policy
5. Help raise awareness of Exploitation
6. Spotlight on Multi-Agency Procedures
7. Launch of new regional multi-agency child sexual abuse procedures
8. New Refuge Provider
9. Solihull Parenting Team – Understanding your child's mental health
10. Position of trust for Sport and Religious Settings
11. LSCP Training

## National review into the murders of Arthur Labinjo-Hughes and Star Hobson

On 26<sup>th</sup> May the national review into the deaths of Arthur Labinjo-Hughes and Star Hobson was published. This review sets out recommendations and findings for national government and local safeguarding partners to protect children at risk of serious harm. The report can be found [here](#).

In analysing what happened to Arthur and Star and how agencies responded, the review identified a set of issues which hindered professionals' understanding of what was happening to Arthur and Star. These are:

- Weaknesses in information sharing and seeking within and between agencies.
- A lack of robust critical thinking and challenge within and between agencies, compounded by a failure to trigger statutory multi-agency child protection processes at a number of key moments.
- A need for sharper specialist child protection skills and expertise, especially in relation to complex risk assessment and decision making; engaging reluctant parents; understanding the daily life of children; and domestic abuse.
- Underpinning all of the above, a need for leadership and management which has a powerful enabling impact on child protection practice and creates and protects the optimum organisational context for undertaking this complex activity.

The Panel notes that these are not new issues – they recur across serious incidents in a number of local areas, which the Panel sees on a fortnightly basis in rapid reviews and local child safeguarding practice reviews.

A series of webinars for strategic managers and frontline staff in Solihull and Birmingham are to be delivered by the National Panel over the coming weeks.

Information about the webinars and how to book a place will be circulated over the next few days.

## JTAI & Improvement Plan

The Joint Targeted Area Inspection took place in January 2022. There has been established an Improving Outcomes for Children in Solihull Board which is chaired by an Independent Chair, Penny Thompson. All Partners represented on the IOCSB are fully committed to supporting our children and families in Solihull and, under Penny's steer, are retaining a firm focus on delivering better outcomes for children.

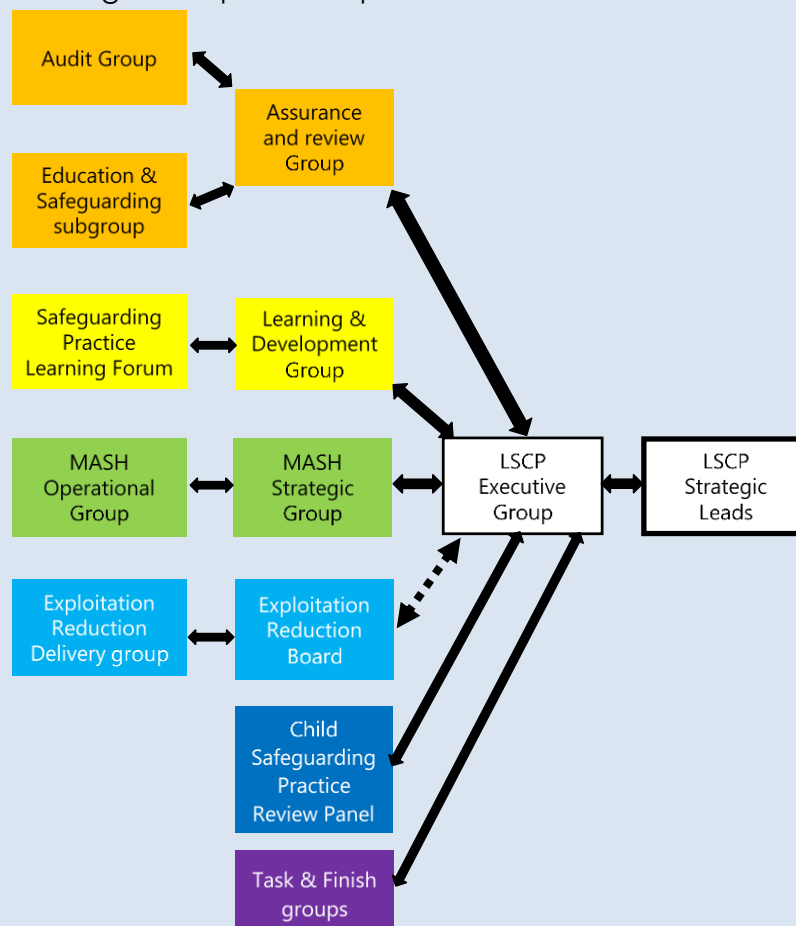
Penny has written a [message](#) to keep you all informed of how the Board is progressing so please do take the time to read it and get a feel for how the Board is improving practices across the safeguarding partnership.

The Local Safeguarding Children Partnership has an Improvement Plan which picks up the following four themes identified by the Joint Targeted Area Inspection:

- Capacity
- Governance
- Quality Assurance
- Dissemination of Learning

This has prompted a review of the partnership's governance arrangements, which has resulted in a change to the sub-groups that drive work forward on behalf of the LSCP.

The inspection recommended an increase in the capacity of the LSCP Business Unit to support the delivery of the partnership's statutory functions. To date the following additional posts have been recruited: Project Officer (temporary for 6 months) and a P/T Administrator (temporary for 6 months). Additional administration capacity is currently being recruited. In June the Local Government Association (LGA) will be undertaking an independent peer review looking at the new governance structure and Business Unit capacity to inform decisions by the safeguarding partners about future resourcing of the partnership.



## Independent Scrutineer's Report 2021/22

Stephen Cullen, our Independent Scrutineer has offered some reflections on his first year as an Independent Scrutineer for Solihull LSCP. The report acknowledges how challenging this year has been for the partnership and the steps we will take to improve going forward. The report can be found [here](#).

## Changes to the LSCP Training Charging Policy

Solihull LSCP delivers a range of multi-agency training which provides colleagues from a variety of settings the opportunity to share experiences and improve their skills in multi-agency working. From the 1st of April 2022 Solihull LSCP has agreed to make all multi-agency training free of charge to participants who attend from all agencies working in Solihull.

It is important that we can allocate places and maximise the resource available to continue to make multi-agency training accessible across the workforce. It has therefore been agreed that any training places not attended, or cancelled within 24 hours of the course running, will be charged @ £40 for half day courses and £80 for full day courses.

If you have a place booked and an emergency arises which means you are unable to cancel before 24 hours, or if you are unable to attend on the day, we will accept another person attending in your place if we are notified at [lscptrain@solihull.gov.uk](mailto:lscptrain@solihull.gov.uk) in advance of the course start time.

Participants arriving late cause disruption to the course and may not be admitted; the non-attendance fee will be applied in these circumstances. All participants are also expected to stay until the end of the course.

Since the resumption of face to face training it has been encouraging to see so many practitioners at multi-agency training courses. We encourage you to look at the LSCP training courses outlined at the end of this newsletter.

## Help raise awareness of Exploitation

In Solihull, we know that those whose work brings them into contact with the public play a positive role in preventing exploitation and human trafficking, which puts children and adults and communities at risk.

You are a crucial part of the fight against these issues by providing opportunities to raise the public's awareness of exploitation and ensuring they know where to go for help and support. By working together, we can all play a positive role in protecting children and adults.

You may be aware of previous information we launched to raise awareness in your settings for staff and volunteers. We are now launching more materials, including a series of posters which can be displayed in publicly accessible areas of local businesses, services and community support organisations, to raise awareness amongst the public of what exploitation is and what to do if they have concerns that someone may be being exploited. The posters include information on what people might see if someone is being exploited and details of a local phone line where concerns can be reported.

The webpage address is <https://www.safeguardingsolihull.org.uk/exploitation-communications/> and information for your staff and members of the public can all be located here.

The resources are available digitally on the webpage, but if you would like hard copies of posters to display in publicly accessible areas of your organisation, please email [ssab@solihull.gov.uk](mailto:ssab@solihull.gov.uk) with the subject heading "Posters" and this can be arranged.

## Spotlight on Multi-Agency Procedures

### **Children of Parents with Mental Health Problems**

Many parents with mental health problems are able to give their children safe and loving care, without their children being negatively affected in any way. But sometimes, parents with mental health problems need support from family members, friends, neighbours and/or professionals, to help them care for their children. This procedure refers to how professionals can help parents where their mental ill health is adversely impacting their parenting. The procedure details a number of child-related factors to consider and how to support, as well as contingency planning. The procedure can be found [here](#).

## Launch of new regional multi-agency child sexual abuse procedures

On Monday 27th June at 3pm Solihull LSCP will launch the new West Midlands regional multi-agency sexual abuse procedures. These procedures have been informed by the latest research and resources from the Centre of Expertise in Child Sexual Abuse and bring together a range of tools and information to assist professionals and volunteers from all organisations to identify, respond, safeguard & support children who may have been sexually abused. Lisa Thompson from the Rape & Sexual Violence Project (RSVP) & Anna Tinkler from the Sexual Assault Referral Centre (SARC) will be delivering the launch.

To book a place at the launch (being delivered via MS Teams) go to the LSCP website <https://training.solihullscp.co.uk/Course/CoursesDetailListing.aspx>

## New Refuge Provider

Panahghar are offering a new service to the BME community in Solihull; a refuge for women and a Male IDVA service. They aim to offer free dedicated BME multilingual support to victims of Domestic Abuse. They have recently opened a Refuge in Solihull supporting women and children, as well as an IDVA service to help support male survivors or all ethnicities who are affected by domestic abuse, sexual abuse and gendered abuse.

Further information can be obtained by going to <https://www.safehouse.org.uk/>.

## Solihull Parenting Team – Understanding your child’s mental health

The Solihull Parenting Team are delivering workshops designed to give Solihull parents and carers a better understanding to support their child's mental health.

This foundation workshop will be delivered via Microsoft Teams, covering a range of themes including:

- What is mental health?
- Common mental health challenges
- Preventing mental health difficulties
- Recognising risk & building resilience
- Promoting well being

Workshops will be held on

- Wednesday 15th June 10-12
- Wednesday 13th July 10-12

To book your place, please contact the parenting team via email to [bsmhft.parenting@nhs.net](mailto:bsmhft.parenting@nhs.net) or by finding them on Facebook by searching Solihull Parenting Team

## Position of trust for Sport and Religious Settings

The Police, Crime & Sentencing Courts Act reached Royal Assent on 28 April 2022 and extends the position of trust to capture those that lead activities in sporting and religious settings: [Boost for public safety as four justice bills receive Royal Assent](#)

Solihull LSCP delivers Managing Allegations Against Staff training, which may now be of interest to these organisations.

## LSCP Training

The courses we are currently offering are detailed below. All courses can be booked through the LSCP website <https://training.solihullscp.co.uk/Learning-and-Development.aspx>

Course	Dates
An Introduction to Safeguarding Children for the Voluntary & Community Sector Virtual Training	30.6.22 10:00-13:00
Module 1 Early Help Virtual Training	28.6.22 9.30-12.30
Module 2 – Child Protection; an introduction to multi-agency working Face to Face training	7.7.22 9.30-16.30
Module 4 – Child Protection; Analysis, judgement and leadership in partnership working Face to Face training	21.6.22 09:30-16:30
Module 5a – All Age Exploitation Awareness Virtual Training	14.6.22 20.7.22 09:30 – 12:30
An Introduction to Contextual Safeguarding Virtual Training	23.6.22 9.30-12.30
Working with Parents as Partners in Child Exploitation Virtual training	9.6.22 9.30-12.30
Module 6- Neglect; impact on child development Face to Face training	22.6.22 9.30-16.30
Module 6(b) – Neglect; Domestic Abuse Face to Face training	5.7.22 09:30-16:30
Module 6c Neglect; Graded Care Profile 2 Face to Face training (unless you are a qualified social worker or Paediatrician you will need to have completed Module 6 before attending this course)	8.6.22 29.6.22 9.30-16.30
Missing – Welfare Return Interviews Virtual Training	14.6.22 13:00-15:30

Booking is made via the LSCP website; <https://training.solihullscp.co.uk/Course/CoursesDetailListing.aspx>

\*Please be aware that face to face training has resumed with Covid safety measures in place; please read further information & risk assessments provided on the website, and be aware that changes may need to be made in line with Government guidance at the time.

