

Children Partnership Newsletter

Please ensure you download pictures to see this newsletter. If you would like to view a PDF version, this will be made available on the SSCP website [here](#).

Early Help Strategy Networking Drop-In



Early Help Strategy

Solihull Safeguarding Children Partnership

A number of Early Help Strategy Networking Drop-In Sessions have been arranged across the borough.

These in-person events are a great opportunity to build relationships and collaborate with others in the field and familiarise yourself with the operation of the Early Help Strategy. The next drop-in sessions will be held on

28th February at Dickens Heath Library. There are currently two timeslots, [12pm](#) and [1pm](#). There are also drop-in sessions being held on 20th March at Olton Library with two timeslots, [12pm](#) and [1pm](#). Please click on the relevant timeslots to book your place. Please note, this event is for professionals only.

Ofsted monitoring visit to Children's Services



Following Ofsted's third monitoring visit to Children's Services on 17/18 January, they have provided a summary of their findings which can now be found [here](#). The letter includes a number of positive comments including evidence of improved social work practice becoming embedded, staff committed to

building relationships with families and more consistent management support. It was recognised that improvements are happening at a much greater pace, which is positive for the service and all partners, but most importantly for our families. The next visit is likely to be in April focusing on Corporate Parenting.

County lines and Exploitation Awareness Training Schedule - 26th Feb - 1st March

West Midlands Violence Reduction Partnership are providing the region with a *FREE* online county lines and exploitation awareness training schedule. This



training schedule has also now been updated to include training from Catch 22. Sessions will take place from the 26th February until the 1st March. These are sessions for a variety of audiences: Professionals/frontline workers, community members, parents/grandparents/carers. For more information and to book your place, please click [here](#).

Sexual Abuse - Research and Training

Latest analysis from the CSA Centre finds that **children are more likely than adults to be the victims of sexual offences**. In fact, they are the victims in 40% of all sexual offences – including rape and sexual assault – yet make up just 20% of the population in England & Wales.

Are you confident that you know the signs and indicators of sexual abuse and what to do if you suspect sexual abuse is happening to a child or what to do if a child discloses sexual abuse to you? SSCP Module 9 training is taking place on 20 March 2024, please click [here](#) to book your place - booking closes on 4.3.24.

Stalking



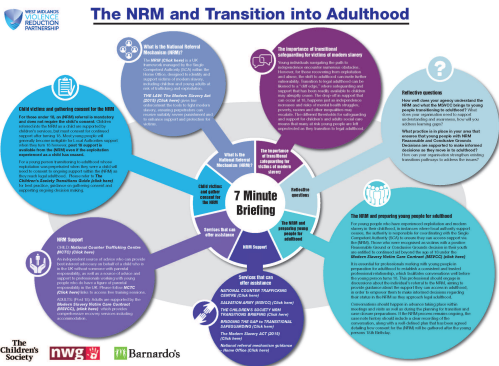
Dr Jessica Taylor is leading on the Stalking Problem Profile for WMOPCC. She is interested in hearing from professionals or people who have received services for stalking, and is seeking Any insight or thoughts around:

- The level of knowledge of stalking in professionals in West Midlands
- The quality of response when someone is being stalked
- Gaps in knowledge, training, resources or services to respond to stalking or harassment of any kind
- Case examples in which stalking has been a major factor (with good or poor outcomes for the victim)
- Case examples in which stalking was occurring via legitimised means (via family court, repeated malicious complaints etc)
- Anything else you think she should be considering whilst exploring the issue of stalking in the West Midlands

If you have any insight you wish to share, please email sscptrain@solihull.gov.uk

The NRM and Transition into Adulthood – 7 minute briefing

West Midlands Violence Reduction Partnership have developed a briefing on the NRM and transition to Adulthood as this was identified as a gap in current safeguarding arrangements for young people. The goal is to provide practitioners with the knowledge and tools necessary to guide vulnerable children and young people effectively through a pivotal time in their lives.



The 7-minute briefing aims to provide you with guidance on several key areas:

- **Understanding the NRM process:** An overview of the NRM’s role in safeguarding young people, especially as they approach legal adulthood, and practical steps to develop transitions support plans.
- **Gathering Consent Post-18:** Guidance on obtaining informed consent from young people (18 and over), which is mandatory for entering or remaining in the NRM. This briefing and links to wider documentation provide advice on how to facilitate these critical consent discussions.
- **Support through Transition:** Guidance on post 18 support that can be accessed through the Modern Slavery Victim Care Contract.

The briefing can be accessed [here](#).

If you have any comments or suggestions for the SSCP Newsletter, please email:

sscp@solihull.gov.uk

For more useful information, advice and guidance, please

visit <https://www.safeguardingsolihull.org.uk/lscp/>

To access multi-agency training provided by the SSCP, please

visit <https://training.solihulllscp.co.uk/Learning-and-Development.aspx>



Listening, Learning and Improving Outcomes for Children and Young People

RESPECTFUL CHALLENGE • ACCOUNTABILITY • LISTENING • LEARNING • INCLUSION