



EXPLOITATION AWARENESS NEWSLETTER

In this newsletter

Solihull LSCP and SSAB have produced this Exploitation Awareness newsletter to provide a range of national and local resources and guidance all in one place to coincide with National Child Exploitation Awareness Day on 18th March 2021.

In this newsletter you will find:

- Definitions and typologies of exploitation
- The NEW Solihull All Age Exploitation Reduction Strategy
- Exploitation Screening tools for both Children and Adults.
- Local resources and campaigns such as 'Eyes Open' from the West Midlands Violence Reduction Unit and West Midlands Police
- National resources from NWG, PACE, Missing People and others

As well as many more resources and guidance.

National Child Exploitation Awareness Day 2021



On Thursday 18th March 2021 it is National Child Exploitation Awareness Day, which aims to highlight the issues surrounding Child Exploitation; encouraging everyone to think, spot and speak out against abuse and adopt a zero tolerance to adults developing inappropriate relationships with children/vulnerable adults or children/vulnerable adults exploiting and abusing their peers.

This National Awareness Raising day provides us with the opportunity to raise awareness of the signs and what to do if concerns are raised. Together, we can work to inform, educate and prevent exploitation within the UK.

Any child can be exploited no matter what culture, ethnicity, religion, whether a boy or a girl from any background, however exploitation and its impact does not stop because someone turns 18.

For more information on the awareness day please go to <https://www.nwgnetwork.org/awareness-day/>

What is Exploitation?

The West Midlands has created a local definition of exploitation:

‘An individual or group takes advantage of an imbalance of power to coerce, control, manipulate or deceive a child, young person (under the age of 18), or adult and exploits them a) through violence or the threat of violence, and/or b) for the financial or other advantage of the perpetrator or facilitator and/or c) in exchange for something the victim needs or wants. The victim may have been exploited even if the activity appears consensual. Exploitation does not always involve physical contact, it can also occur through the use of technology, e.g. as the result of a grooming process which takes place during conversations in chat rooms, or through the use of social media.’

Modern Slavery and Trafficking

The Home Office have published a [report](#) looking at Modern Slavery and Trafficking and identifying 17 typologies of Modern Slavery Offences in the UK. They have also produced a [video](#) which provides information on Modern Slavery and how to spot potential victims.



Labour exploitation	Domestic servitude
<ul style="list-style-type: none"> • Victims exploited for multiple purposes in isolate environments • Victims work for offenders • Victims work for someone rather than 	<ul style="list-style-type: none"> • Exploited by partner • Exploited by relatives • Exploiters not related to victims
Sexual exploitation	Criminal exploitation
<ul style="list-style-type: none"> • Child Sexual Exploitation—group exploitation • Children Sexual Exploitation—single exploiter • Forced sex work in fixed location • Forced sex work in changing location • Trafficking for personal gratification 	<ul style="list-style-type: none"> • Forced gang-related criminality • Forced labour in illegal activities • Forced acquisitive crime • Forced begging • Trafficking for forced sham marriage • Financial fraud (including benefit fraud)

Solihull All Age Exploitation Reduction Strategy 2020-22

In December, Solihull launched its All Age Exploitation Reduction Strategy. The strategy sets out the partnership approach to identifying exploitation at the earliest opportunity and ensuring that individuals, their families and support networks access the right services at the right time. The strategy can be found [here](#).

A PowerPoint presentation has been developed to accompany the strategy in order to summarise its aims and highlight the relevance of the document to those who may come into contact with individuals who may be at risk of or being exploited. The PowerPoint can be found [here](#).

Solihull Exploitation Capability Framework

This framework identifies the core capabilities of: knowledge, skills and understanding, for four key groups of learners ranging from those who have contact with the general public, to managers with responsibility for supporting and supervising practitioners who provide on-going support to victims of sexual exploitation. The framework can be found [here](#).

Screening Tools

Adult Exploitation Screening Tool

An Adult screening tool has been developed and its now in use for professional to complete with individuals they are working with, where exploitation may be a risk factor. The aim is that this tool can be used by any professional to assist them in identifying risk factors for exploitation and it provides potential outcomes based on the information they have collated, this includes making a safeguarding referral to Adult Care and Support. The screening tool can be found [here](#).

Childrens Exploitation Screening Tool

The Childrens exploitation screening tool has been revised to incorporate wider exploitation. The screening tool can be found [here](#).

Language Matters

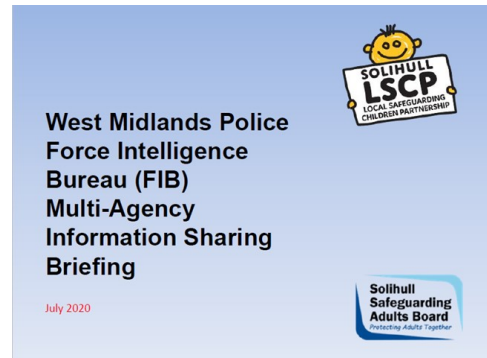
When discussing exploitation the language we use matters. Phrases such as “provocative”, “making lifestyle choices” and “refusing offers of support” fail to take into account the extent to which a person has been affected by the abuse that they have experienced.

Solihull Safeguarding Adults Board and Solihull Local Safeguarding Children Partnership have developed some guidance for staff around what language is appropriate when discussing exploitation, and what language can be unhelpful.



West Midlands Police FIB Form and Briefing

This PowerPoint has been developed by Solihull LSCP and SAB to explain when the West Midlands Police Force Intelligence Bureau (FIB) form should be used. A link to the FIB form can be found [here](#), and the PowerPoint can be found [here](#).



Adult Grooming—One Minute Guide



Grooming is a form of abuse that involves manipulating someone until they're isolated, dependent, and more vulnerable to exploitation.

When most people think about grooming, they think about children. But adults are vulnerable to grooming too.

Grooming can lead to many different types of harm, including modern slavery, physical, sexual and financial abuse. Learn to spot the signs of adult grooming [here](#).

Is My Home Being Invaded

The SSAB and LSCP are pleased to launch two documents for anyone who is living independently, their families and supporters. It is for people to share and go through together and talk about. This leaflet talks about a type of criminal activity that happens when a person's home is taken over by others for things like producing, storing and supplying drugs and/or weapons, having parties and encouraging sexual activity. You may have heard this type of activity referred to as 'Cuckooing', however we are supporting the NWG movement to stop the use of this term as it desensitises people from understanding the abuse that someone suffers when their home—a place they should feel safe and in control—is taken over by abusers.

This leaflets helps you to think about what to look out for and what to do if this happens to you or someone you know. The leaflet can be found [here](#) and there is also an easy to read version [here](#).



The NWG Network Toolkit

‘Criminal, Civil and Partnership Disruption Options for Perpetrators of Child and Adult Victims of Exploitation’

The Toolkit details options available to disrupt perpetrators, using a variety of different powers and tools, which are available through a multi-agency approach. The NWG Toolkit can be found [here](#).

“Something doesn’t feel right”

Guidance on Professional Curiosity and Persistence

We know that it is better to help individuals and families requiring our support as early as possible, before issues get worse. That means that all agencies and practitioners need to work together—the first step is to be professionally curious.

Professional curiosity is a recurring theme from Safeguarding Adults Reviews completed both locally in Solihull (John, Rachel, Graham, Peter and Stephen SARs) as well as regionally and nationally. The guidance can be found [here](#).

Not Just a Thought...

The ‘Not Just a Thought...’ communication model has been co-produced with 75 children and young people who worked with professionals from the NHS, Social Care, Education, Police and the Charitable Sector. The model supports practitioners, children and young people to work together, to share their thoughts that will help reduce abuse. In the spirit of keeping the conversation going, the website <http://notjustathought.org.uk/> is open to all ages and the language used will be child and young person friendly.

Young people at risk of extra-familial harm

[Assessment and intervention planning for young people at risk of extra-familial harm: A practice guide](#)

This document has been designed by the London Borough of Hackney in partnership with the University of Bedfordshire’s Contextual Safeguarding Unit to support practitioners to undertake assessments which are holistic in nature – taking into account both the context of children’s experiences within their family home and in other social spaces. It supports practitioners to:

- Assess the risk of extra familial harm to a young person;
- Consider the needs of a young person subject to extra-familial risk; and
- Make recommendations/plan for on-going work which addresses extra-familial risk of harm.

Victim Support

Victim Support are a charity set out to help anyone affected by crime, not only those who experience it directly, but also their friends, family and any other people involved.

It doesn't matter when the crime took place – individuals can receive support at any time, and for however long you need it.

This support is based on an individual needs assessment and support plan, which is designed to empower an individual to move forward from the crime. If victim support are not the right service, they will signpost and refer to other agencies who can offer the right support. The team provide a wide range of specialist services that help people affected by all types of crime including, but not limited to, burglary, hate crime, fraud, theft, domestic abuse, rape and sexual assault, exploitation and terrorism.

For more information please go to <https://www.victimsupport.org.uk/>



'Trapped'

This short video has been developed to raise awareness of the criminal exploitation of young people and vulnerable adults. It tells the story of a boy who has been groomed by a drug dealer and then forced to sell drugs in another town.

<https://vimeo.com/241062607>

Solihull LSCP and SAB Dispute Resolution Procedures

Both the LSCP and SAB have developed procedures for practitioners to follow when there has been a professional disagreement. Click [here](#) for the LSCP procedures and here for the SSAB procedures.

CSE Police and Prevention

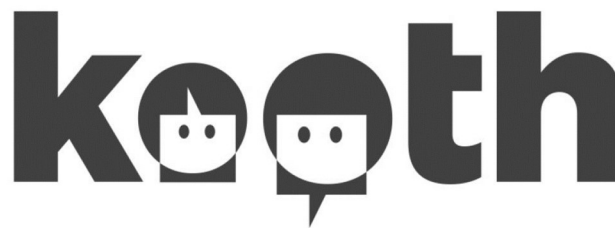
Over the last year the Prevention Programme have created a number of resources that may be useful for professionals when working with children and young people, their families and communities.

A National CSAE Prevention Strategy has been developed for both England and Wales with a view to support improvements in preventative and protective responses.

The documents which can be found [here](#), can be used to inform good practice in relation to CSAE and other forms of abuse. A number of toolkits and guidance documents have been created to provide a more in depth view of some particular themes and issues that were identified during the scoping work undertaken by the network.

Kooth

As a fully commissioned service, [Kooth.com](https://www.kooth.com) provides a free, safe, anonymous and non-stigmatised way for young people to receive advice and support online for all young people aged 11-25 years in Solihull. Staffed by fully trained and qualified team members, and available until 10pm each night, 365 days per year, it provides a much needed out of hours' service for advice and support. As well as 1:1 support, peer to peer support can also be accessed through our moderated message forums and online magazine.



Our experienced practitioners are available to provide emotional support to young people with a wide range of issues, from having a bad day to more serious issues such as bullying, stress, anxiety, depression, family relationships, sexuality, eating disorders, self-harm, exploitation, abuse etc. During such unprecedented times, lots of young people are also seeking support around isolation, predicted exam grades, change of life, their future outlook, employment options and fear of COVID19 to mention a few.

SafeCall

Are you a professional who thinks a child or young person that you are working with is being made to sell or transport drugs, or is at risk of being exploited? Are you working with a parent or carer of a child or young person that has found themselves caught up in this form of exploitation? SafeCall offers a non-judgemental, safe space for those affected by exploitation to talk about their experiences, offering reassurance, exploring choices and helping them to formulate a safety plan.

The SafeCall service will also reach out to a child or young person's parent or carer, offering them a chance to debrief, access emotional support and be guided on how to keep their family safe in future.

For information on how to use SafeCall please go to <https://www.missingpeople.org.uk/safecall-service>

Don't Pass the Parcel

A fantastic piece of music created by Theo Thompson from the youth group organisation Young Solihull. The song aims to educate young people on the dangers of becoming involved in county lines drug gangs. The video can be found [here](#).

Expect Respect

Expect Respect is a prevention toolkit that will help you to lead sessions around healthy relationships for children and young people aged 4-18. It contains age-appropriate activities that can be used in a range of spaces, but it can also be used with adults. It will help you to hold conversations about the root causes of violence, and educate young people on gender-based violence. <https://www.womensaid.org.uk/wp-content/uploads/2021/02/Expect-Respect-Healthy-Relationships-Toolkit.pdf>

For more information on how to become an expert respect advocate, with access to free training & support to use the tool kit visit:

<https://www.womensaid.org.uk/what-we-do/education-and-public-awareness/expect-respect/>

Eyes Open

West Midlands Police have launched a campaign warning how drugs gangs are grooming children – and urging everyone to be alert to the signs indicating young people could be at risk.

The Eyes Open campaign will run for a month across social media and uses real life accounts from teenagers as young as 15 who'd been lured into dealing drugs.

“The campaign urges people to look out for the signs that young people are being exploited, including new phone or clothing, change in attitude or habits, and hanging around with new people. And to report concerns to us, children’s services or a children’s charity.”

For more information click [here](#)

**NEW PHONE. NEW BIKE.
NEW MATES. NEW CLOTHES.
NEW HABITS. NEW ATTITUDE.
THE SIGNS OF EXPLOITATION
CAN BE HARD TO SEE.**

Drug gangs are exploiting kids in our area.

“It was hard to escape”

The Child Safeguarding Practice Review Panel has published a national review, which aims to identify what might be done differently to protect children who are criminally exploited. This review sets out recommendations and findings for government and local safeguarding partners to protect children at risk of criminal exploitation. The review examines 21 cases where children died or were seriously harmed, in which criminal exploitation was a factor. The review identifies areas of innovative good practice and contains recommendations at local and national level. The full report can be found [here](#).

Learning from Rachel

SSAB have published a practice briefing surrounding the Rachel SAR. The review highlighted several findings and identified recommendations for professional working with those who are victims of exploitation. The practice briefing can be found [here](#).

#LookCloser

Young people are being exploited and are losing hope, but it's not always obvious. The Children's Society have developed the #LookCloser campaign, in partnership with the National County Lines Co-ordination Centre and British Transport Police, encouraging everyone to learn the signs of child exploitation and how to report it if worried.

Young people are groomed into exploitation and abuse both online and offline. They may be sexually abused, forced into labour, made to launder money for criminals through their own bank accounts, or coerced into committing crimes like transporting drugs or stealing from shops.

Buses, trains, trams and coaches are used to facilitate the movement of a young person when they're being exploited. Fast food outlets and roadside services may be used for amenities and food stops. Hotels, salons and car washes may be places where exploitation happens 'behind closed doors'.

For more information and what signs to look out for please visit the Children's Society website [here](#).

Exploitation can
happen anywhere

**Don't
wait.
Report
it.**

NSPCC: Learning from Case Reviews

NSPCC Learning has published a [briefing](#) based on learning from 15 case reviews from the national repository published between 2018 and 2019, featuring children aged 13-18. The case reviews highlight that: practitioners sometimes struggle to work with teenagers who are experiencing complex issues; interventions can focus on tackling challenging behaviour, rather than exploring the underlying causes and risk factors; and practitioners sometimes lose sight of the fact that teenagers are children in need of protection.

Posters and Videos




A PERSON IS BEING EXPLOITED IF SOMEONE:

- MAKES THEM FEEL LIKE THEY HAVE NO CHOICE
- THREATENS THEM, THEIR FAMILY OR LOVED ONES
- PRESSURES THEM TO PROVIDE SEXUAL SERVICES
- MOVES THEM BETWEEN LOCATIONS WHERE SEX IS BEING SOLD
- CONTROLS THEIR DAY TO DAY LIFE

IF YOU OR SOMEONE YOU KNOW IS IN IMMEDIATE DANGER CALL 999
To report to Adult Social Care call 0121 704 8007
For confidential help or to report a suspicion contact the Modern Slavery Helpline 0800 0121 700

Solihull Safeguarding Adults Board | www.ssab.org.uk | @SolihullSAB

[Sexual Exploitation](#)



STOP THE TRAFFIK.
PEOPLE SHOULD BE BOUGHT & SOLD

YOU ARE BEING EXPLOITED IF SOMEONE:

- MAKES YOU FEEL LIKE YOU HAVE NO CHOICE
- THREATENS YOU, YOUR FAMILY OR LOVED ONES
- PRESSURES YOU TO PROVIDE SEXUAL SERVICES
- MOVES YOU BETWEEN LOCATIONS WHERE SEX IS BEING SOLD
- CONTROLS YOUR DAY TO DAY LIFE

IF YOU OR SOMEONE YOU KNOW IS IN IMMEDIATE DANGER CALL 999
For confidential help or to report a suspicion: Modern Slavery Helpline 0800 0121 700
To anonymously report a crime: Crimestoppers 0800 555 111

www.stopthetraffik.org

[Trafficking](#)



EXPLOITATION SPOT THE SIGNS

- MISSING DAY OR NIGHT:** Missing from home or school. Not knowing where they are or who they are with.
- CHANGE IN APPEARANCE:** Looking unwell, hygiene, looking extremely tired.
- CHANGE IN BEHAVIOUR:** Have they become unusually nervous, fearful or withdrawn, aggressive, distressed? Do you notice any family and friends, including their social media contacts?
- NEW PLACES:** Discovering they have been going to new places where they have no obvious connections.
- ONLINE USE:** Spending more time online. Sometimes activity related to crime online. Have they distanced themselves from family, friends and usual activities?
- INJURIES:** Unexplained wounds, cuts, burns, marks. Reluctance to seek medical attention.
- COPING MECHANISMS:** Alcohol, drugs, smoking, self-harm, eating disorders, what they are doing to cope.
- POSSESSIONS:** Unexplained items, e.g. New clothing, money, phones, drugs, etc.
- CHANGE IN FRIENDS:** Sudden change in who they are hanging out with including meeting new people from social media.

HELP US STOP EXPLOITATION

SAY SOMETHING, IF YOU SEE SOMETHING SUSPICIOUS.
CONTACT: Crimestoppers 0800 555 111 | Police 101

From the national youth immediate protection line 999
If you think a child or young person is suffering or likely to suffer significant harm contact the NSPCC helpline on 0800 1111
If you think an adult is suffering or likely to suffer significant harm call Adult Social Care on 0121 704 8007
Sign of hope call the Trafficking Help Line on 0800 555 0868

[Spot the Signs](#)



Cuckooing/Home Invasion is a form of crime in which drug dealers take over the home of a vulnerable person in order to use it as a base for drug dealing

The following signs may indicate that an individual or family's property has been cuckooed/invaded

- New vehicles regularly parking or remaining outside the property
- An increase in anti-social behaviour
- Restricting access to parts of the property to friends or professionals
- An increase in the number of people visiting the property
- Curtains or blinds always being closed
- Individuals or families staying away while unknown individuals remain

Solihull Safeguarding Adults Board | www.ssab.org.uk | @SolihullSAB

[Home Invasion](#)

'Catfish': a short and powerful film about how young girls are being targeted online. The video can be found [here](#).

Websites

Thinkuknow

Thinkuknow is the education programme from NCA-CEOP, a UK organisation which protects children both online and offline. <https://www.thinkuknow.co.uk/>

Missing People

Missing People aim to improve the support and services available to missing children, adults and their families. <https://www.missingpeople.org.uk/>

PACE

Pace supports parents and carers whose children are being exploited by offenders outside of the family. <https://paceuk.info/>

Training Opportunities

Solihull LSCP Module 5a

The LSCP offer a '[Child Exploitation Awareness](#)' half day course, aimed at those who work with children and young people and who are responsible to identify and respond to child exploitation. Dates are released every month and practitioners who work with both children and adults are able to register on this course.

Loan Sharks

Loan sharks can sometimes be linked with exploitation. A loan shark is someone who lends money, rarely giving any paperwork and if repayments are missed they often use violence and intimidation.

The free training will give you more in-depth information about the project background, key things to look out for as a frontline worker, the relevance of loan sharks for your organisation and a better understanding of information and intelligence. We will also show you the impact that loan sharks have on victims and communities which will be your client group. Loan sharks also impact upon crime and disorder.

To book a place click on the Eventbrite link below

<https://www.eventbrite.co.uk/e/loan-sharks-dont-knock-tickets-142506826755>

Contact Us



To contact Solihull LSCP:

By email: lscp@solihull.gov.uk

By phone: 0121 788 4325



To contact Solihull SAB:

By email: ssab@solihull.gov.uk

By phone: 0121 788 4392