

WELCOME to the SSAB Newsletter

Local News	Page 1-2
World Elder Abuse Awareness Day	Page 3
Training	Page 4
Safeguarding Adult Reviews	Page 5
Making Safeguarding Personal	Page 6
National Policies, Procedures & Guidance	Page 6-7
Board & Sub-Committee News	Page 8
Contact Details	Page 9

LOCAL NEWS

SSAB Staffing Update

As many of you may be aware, Sue Walton recently retired from the SSAB Business Manager Post. Sue had built up a great working relationship with so many people and will be very missed. Fortunately for us we have had a fabulous replacement. Rachel Swain, who was previously our SSAB Development Officer has been recruited to the post. I'm sure Rachel will do a great Job.



Good bye Sue...Congratulations Rachel

SSAB Annual Report

This report provides an overview of the work of the Board, our partners, and our sub-groups during this extraordinary year of the Covid 19 pandemic.

Covid 19 has meant significant changes and challenges to our communities and neighbourhoods, to the way services are delivered and how business is conducted. Our hospitals have been overwhelmed at times with Covid 19 patients, non-essential treatments have been impacted, care homes for the most part of the year have had to close their doors to visitors and a large proportion of our community have been shielding. Working from home has become the new normal and meetings convened using digital platforms such as WebEx, Teams or Zoom.

However Safeguarding Adults has not changed. Safeguarding adults has remained a statutory function and a priority.

Nationally and locally at the start of this year and the pandemic the number of safeguarding concerns being raised reduced only to increase and return to normal as everyone adapted to the Covid 19 restrictions. Nationally and locally the number of people experiencing Domestic Abuse increased significantly, however this has not translated in the same way into Safeguarding Adults concerns. Nationally the number of people targeted by scammers increased but locally this has not been the case.

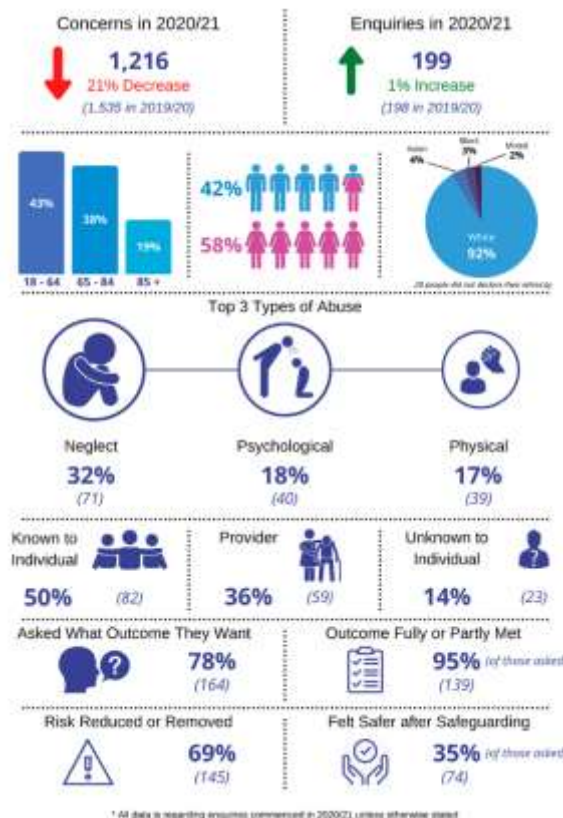
Moving from physical meetings to virtual meeting has increased attendance and participation. Professionals and practitioners have found the increasing use of digital technology not only challenging but also helpful, enabling, and accessible.

During this extremely challenging year, we have made exceptional progress with our Board Priority Exploitation. An All Age Exploitation Reduction Strategy has been agreed and published; a Competency Framework, Adult Screening Tool and the All Age Exploitation Reduction Procedures have been developed and launched.

In the autumn, we came together with the Local Safeguarding Childrens Partnership and the Community Safety Partnership to consider the agreed priorities for the three partnership boards, through the lens of Covid19 and nothing being as we imagined it was going to be. And to think about where the gaps have appeared and what that has meant for our practice in safeguarding people in Solihull.

As we move into 2021-22 the Covid 19 pandemic remains with us and we will continue to work in partnership to ensure Safeguarding adults remains a priority. We will also:

- Continue with our priority – Exploitation -
- Strengthen and clarify the relationships and governance between the Safeguarding Adults Board, Safeguarding Childrens Partnership, Community Safety Partnership and Health and Wellbeing Board



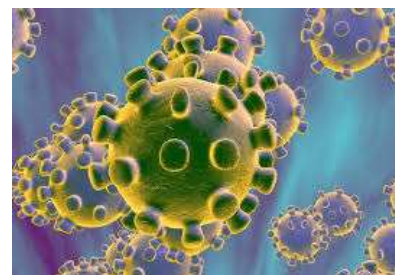
- Take a focus on Safeguarding Adult Reviews.

[Click here to read the 2020-21 Annual Report](#) or [click here to read the Easy-to-Read version](#)

Covid-19 – Coronavirus

As we come out of lockdown, professionals and practitioners will start to have more contact, and particularly face-to-face contact with adults who had been shielding, or who are living in residential or nursing care homes or who may have cancelled their service, so we need to be especially alert to possible indicators of abuse or neglect.

People with mental health problems, OCD, drug, and alcohol dependencies may be in a state of heightened anxiety. People who are street homeless may have lost income from begging and be facing reduced access to drugs and alcohol on which they depend. Commentators have warned of increased incidence of depression and suicide risk as a result of fear and loss of freedoms, loved ones, income, and hope. At this time, those who are particularly vulnerable may accept help from those who seek to exploit them.



Solihull Safeguarding Adults Board has produced [Safeguarding things to look out for as we come out of lockdown](#)

NEW NEW NEW NEW NEW NEW NEW

All Age Exploitation Screening Tool

In March 2021, the [Solihull All Age Exploitation Procedures](#) were launched with 2 separate screening tools – one for under 18's and another for over 18's. Each was very different – one being based on a regional tool and quite lengthy, the other being developed locally and more concise.

It was agreed when the Procedures were being designed that where possible, tools would be developed for all ages and not specific to children and adults, unless required in practice or by legislation or statutory guidance.

A working group of professionals from Children and Adult Services, West Midlands Police, Schools and Health Providers have worked with the Safeguarding Adult Board & Children's Safeguarding Partnership to develop this new tool. To support the new tool guidance is also available. This NEW tool should now be used.

[Click here to access the All Age Exploitation Screening Tool](#) and [click here for the accompanying guidance](#)

SMBC Large Scale Enquiry Practice Guidance

A Large-Scale Enquiry (LSE) is a coordinated multi-agency response to protect Adults with Care and Support Needs from abuse. An LSE may be triggered where the statutory safeguarding duty is met relating to more than one adult, a location or network that facilitates abuse, or a provider that fails to protect adults from abuse. Historically LSE processes have only focused on institutions and organisations but can be used to manage other complex situations such as the large-scale enquiry into sexual exploitation in Newcastle, Operation Sanctuary. [Link to Operation Sanctuary JSCR](#)

The purpose of this document is to provide a framework to effectively manage multiple safeguarding enquiries in one process. [Link to SMBC Large Scale Enquiry Practice Guidance](#)

Changes to LeDeR - Learning from Life and Death Reviews of people with a learning disability and autistic people

From 1 June 2021, the Learning Disability Mortality Review (LeDeR) process has changed. This has resulted in a NEW platform for Solihull and Birmingham to be used to report the death of someone with a learning disability.

Across Birmingham and Solihull there have been a small number of death notifications since the change to a new platform, however, there have not been as many in comparison to previous months. [Please use this link to report any death of someone with a learning disability](#). It is better that a death is reported by multiply people rather than not at all.



World Elder Abuse Awareness Day (WEAAD) Tuesday 15th June 2021

As in previous years, with Age UK Solihull we promoted WEAAD and encouraged local organisations involved in care to pledge to stamp out elder abuse and to wear purple or hold purple themed events and raise funds for Age UK Solihull.



Some highlights are:

- Solihull Observer Online did a great article on 3rd June 2021.
- Saxon Court held a raffle.
- Longview Extra Care participated in the day.
- Lady Katherine Leveson Retirement Home held a tombola and raffle. Are organised a cake and coffee morning.
- Prince of Wales Nursing Home participated in the day.
- University Hospitals Birmingham sent us photos wearing purple ribbons and
- The SSAB Business Team used Twitter to raise awareness.
- £435 was raised for Age UK Solihull.



WORLD ELDER ABUSE AWARENESS DAY - DOMESTIC ABUSE & OLDER WOMEN

On World Elder Abuse Awareness Day in June, SSAB welcomed 46 practitioners from a variety of organisations to a webinar on Domestic Abuse and older women led by Birmingham and Solihull Women's Aid.

This was an interactive and informative session covering:

- Myth busting around domestic abuse and older women
- Some of the barriers to accessing support
- How to ask direct questions
- What is important to older survivors of domestic abuse
- Anonymised examples from Women's Aid's work with older survivors



The session was very positively reviewed with comments including:

"It made me rethink how I ask the important questions."

"The training was fabulous. It was delivered beautifully considering it was over Teams."

"I found it really useful, and well presented. I thought it was excellent and engaging."

[Click here if you'd like to access the recording of this webinar](#)

TRAINING

Videos

7th – 13th June 2021 was Carers Week

For this year's Carers Week Solihull Carers Trust produced some videos by carers about their experiences as a carer.

[Link to video 1](#)

[Link to video 2](#)

SCIE - Quick guide: Good practice in safeguarding training

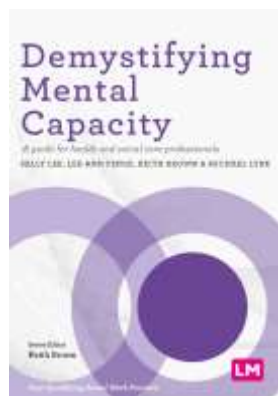
Safeguarding adults in care homes means protecting their right to live in safety and acting to prevent abuse and neglect whilst taking into account each person's views, wishes, feelings and beliefs. Training is one way of making sure this happens.

This quick guide, aimed at registered managers of care homes, explains what to cover in training and how to deliver it, including how to evaluate training in your care home. [Click here to read in full](#)



Books

Demystifying Mental Capacity



Set against the backdrop of the Mental Capacity Act 2005, this book explores and addresses issues raised by mental capacity within adult safeguarding, and provides clear guidance on the use and value of the MCA, and how to ensure that the rights and choices of individuals are heard, listened to and acted upon.

With contributions from a range of subject experts across the legal, social work, nursing and healthcare disciplines, this book will be invaluable to practitioners in the health and social care profession, and indeed any role where issues of mental capacity may be a concern. Case studies, reflection points and exercise are used to develop understanding and support critical engagement with practice. [Link to Book](#)

Towards Outstanding

Written by one of the Care Quality Commission's most experienced regulators, Towards Outstanding offers an inside look at the qualities, cultures and approaches that lead to Outstanding ratings in health and social care and shows how any service provider can set out to achieve the same.

Built upon the principle that all services can and should provide excellent care, Towards Outstanding is about learning through reflection and sharing outstanding practice. Senior CQC inspector Terri Salt shows how a mindset of getting the basics right then applying context-specific finishing touches can allow any service to drive improvement and move towards an Outstanding rating. She also explores why, in addition to other patient and organisational benefits, good care is cheaper to provide than poor care. Structuring her advice around the five questions that CQC inspectors use (are services safe, effective, caring, responsive and well-led?), the author draws on personal vignettes to paint a picture of a service where trust, positivity, a shared vision and a commitment to continuous improvement allow staff to generate new ideas, reflect on best practice, raise concerns where necessary and keep the patient at the centre of all activity.



SAFEGUARDING ADULT REVIEWS

What are they?

When an adult who needs care and support either dies or suffers serious harm and:

- Abuse or neglect is thought to have been a factor, and
- Partners could have worked more effectively to protect the adult concerned

Then Section 44 of the Care Act 2014 says that the local Safeguarding Adult Board may need to review what has happened. This is called a Safeguarding Adults Review or SAR for short.

These reviews are to see if there are examples of good practice and also whether or not any lessons can be learned about the way organisations worked together to support and protect the person who suffered harm. These reviews will not seek to lay blame but to consider what happened and what could have been done differently. They will also recommend actions to improve responses to keep adults with care and support needs safe from abuse or neglect in the future.



Care Act
2014

Who can make a referral and how?

Any organisation can make a referral. If you know of a case that meets the SAR criteria, then you should first discuss a possible referral with the safeguarding lead for your organisation. Referrals should be quality assured and authorised by your agency's Safeguarding Lead or a Senior Manager prior to submission.

The West Midlands regional adult safeguarding hub hosts the Safeguarding Adult Review Referral Form [here](#)

What happens after a referral has been made?

A multi-agency panel of professionals who were not directly involved in the case will meet to consider the referral and make a recommendation to the Safeguarding Adults Board Independent Chair as to whether it meets the criteria for a SAR.

If the decision is that it doesn't meet the criteria, the referrer will be informed, and the panel will consider whether any other process is needed to identify learning from the case.

If the decision is that it does meet the criteria, then a review will be undertaken which will look at what happened in the case what lessons can be identified and what recommendations should be made to improve things for the future. Reviews should involve the individual or their family as appropriate.



A report identifying the findings will normally be published on the Safeguarding Adult Board's website. The findings will also be detailed within SAB's annual report.

Solihull Safeguarding Adult Reviews

The SSAB website hosts Safeguarding Adult Review reports completed in Solihull. Practice briefings which aim to share the learning from Safeguarding Adult Reviews in a plain English format are also published and should be used to gain an overview of the case, key messages and further resources to aid learning and development [click here](#).

MAKING SAFEGUARDING PERSONAL

Do we need to treat people differently to provide equality?

Clenton Farquharson MBE, Think Local Act Personal Chair, opens a conversation about equality, and equity, and asks if we need to treat people differently to provide equality of opportunity.

“For us as a society to move towards equality we need to understand that equal and fair are not always the same”

[Click here to read Clenton's article in full](#)

NATIONAL POLICIES, PROCEDURES AND GUIDANCE

Tea, Smiles and Empty Promises

31 May 2021 marked the ten-year anniversary of the exposure of abuse and mistreatment at Winterbourne View, an Assessment and Treatment (inpatient) unit on the outskirts of Bristol.

The BBC Panorama documentary ‘Undercover Care’ highlighted a regime of physical and psychological abuse, neglect and mistreatment in a hospital intended to assess and treat some of society’s most vulnerable. That night, the families of people still at Winterbourne View, and the many others who had been ‘assessed and treated’ there prior, watched in horror as the reality of their family members’ experiences were exposed.

Mencap has published this collection of family stories.

[Available by clicking here](#)



Quick guide: Creating a positive safeguarding culture - A quick guide for registered managers of care homes

Published by SCIE April 2021

Safeguarding adults in care homes means protecting their right to live in safety and acting to prevent abuse and neglect. Working together to achieve this is everyone’s responsibility.

This quick guide, aimed at registered managers of care homes, covers policy and procedure requirements with the aim of creating and maintaining a positive safeguarding culture.

[Click here to read](#)



Analysis of Safeguarding Adults Reviews targeted briefings

published by the Local Government Association February 2021 - [Click here to access the document](#)

The Care and Health Improvement Programme (CHIP) safeguarding work stream commissioned Suzy Braye, Michael Preston-Shoot and Research in Practice to undertake a review of SARs published in 2018/18 and 2018/19 to inform future priorities for sector led improvement in safeguarding adults’ practice. This is a ‘once in a decade’ opportunity to identify learning from SARs at a national level, as there is no regular reporting mechanism.

Six shorter targeted briefings have been developed to enable easier access to the wealth of information and guidance arising from this work. These have been developed for: Elected members, senior leaders, such as directors of adult social services (DASS’s) and members of Safeguarding Adults Boards, practitioners, Safeguarding Adults Board (SAB) chairs and business managers, Safeguarding Adults Review authors and individuals and their families. These extract findings from the report most relevant to these particular audience and identify key messages for taking the learning and improvement work forward.

The purpose of the briefings is to enable the learning and key messages from the analysis to be disseminated and have an impact across safeguarding practice and systems, supporting sector led improvement in adult safeguarding.

The role of police in responding to child and adult vulnerability: A meta-analysis of 126 reviews of death and serious harm published by The Vulnerability Knowledge and Practice Programme (VKPP) a national policing programme working with all forces in England and Wales.

[Click here to read](#)

This report presents key findings from research into the police role in serious cases of significant harm and death, carried out by the Vulnerability Knowledge and Practice Programme (VKPP). The research aimed to understand the ways in which police, as a statutory partner, feature in reviews of serious cases of significant harm or death in children and adults; key gaps in police practice; and to understand the cumulative learning for police across different review types, involving a range of vulnerabilities.

The research is based on an analysis of 126 reviews: 69 Serious Case Reviews (in England)/ Child Practice Reviews (in Wales), 45 Safeguarding Adult Reviews (in England)/ Adult Practice Reviews (in Wales), 10 Domestic Homicide Reviews and two joint reviews.

Chief Social Workers' annual report: 2020 to 2021 published by the Department of Health and Social Care in April 2021

[Available to read by clicking here](#)

The joint Chief Social Workers for Adults - Fran Leddra and Mark Harvey through their Annual Report have looked back over the last year and reflected on the progress made on the priorities set out in last year's plan.

Transitional safeguarding, particularly criminal and sexual exploitation, was one of their priorities last year. They engaged with the sector through a number of roundtable discussions and are working with partners to produce guidance for the sector in 2021.

They also set up an Adult Safeguarding Forum in 2020, which brought together key sector partners across systems to regularly share good practice and learning, and address issues as and when they arise. They look forward to this ongoing partnership and acting to ensure high quality safeguarding practice across the country, ensuring systems work with one another.

Last year, they also committed to producing a code of practice for adult safeguarding teams, which was unfortunately delayed due to immediate COVID-19 pressures. They have re-started this work to support local authorities to ensure statutory responses are informed by a consistent and person-centred approach. Consultation will begin in Spring 2021, with publication aimed for Summer 2021.

[Bridging the Gap Transitional Safeguarding and the Role of Social Work with Adults](#)

This knowledge briefing is for people involved in safeguarding adults and social work. It is relevant to practitioners, senior leaders and other social care professionals providing support across local safeguarding partnerships.

This briefing:

- describes what transitional safeguarding is, why it is needed and how the contribution of adult social work is essential to developing and embedding a more transitional approach to safeguarding young people into adulthood
- focuses on sexual and criminal exploitation
- aims to inform, inspire change, and celebrate the contribution of the adult social work sector.



BOARD AND SUB COMMITTEE NEWS

Safeguarding Adults Board Meeting

The Board's **priorities for 2020-21** are:

- **Exploitation and Transitions**
- **Safeguarding Adult Reviews and**
- **Strengthening the links to CSP, LSCP and H&WBB**

The Board meeting on the 10th June 2021 welcomed Sue Ross as the new Independent Chair. The Board received a presentation from West Midlands Police detailing the progress WM Police & Crown Prosecution Service have made in response to the Poor Relation report/ inspection. Birmingham and Solihull CCG give the Board a presentation on CQCs review of 'do not attempt cardiopulmonary resuscitation' (DNACPR) decisions during this Covid 19 pandemic and BSOL CCG LeDeR Strategic Plan. SMBC presented a report detailing the Covid-19 Vaccination process and take up by Social Care Staff in Solihull and Care Home visiting in Solihull.

Next Board meeting is 2nd September 2021

Engagement & Prevention Sub-Committee

At our meeting on 22nd July, we discussed the activities which took place to mark World Elder Abuse Awareness Day on 15th June. We thought about what we might do to mark Hate Crime Awareness Week 9th-16th October 2021 and we agreed how we would start to review the Safeguarding Adults Leaflets. We also heard about the work SMBC have started for people who fund their own care – which we offered to support.

Next meeting is Thursday 21st October 2021

Performance & Audit Sub-Committee

At our meeting on 20th July, we reviewed the performance dashboard for Quarter 1 and discussed increasing the information on protected characteristics. We considered data on SAR referrals to the SAB as none have been received since 2019. We also received presentations on recent audits undertaken by BSMHFT and SMBC on safeguarding practice and we agreed proposals for a multi-agency case file audit on exploitation which will be undertaken jointly with the Local Safeguarding Children Partnership.

Next meeting is Tuesday 19th October 2021

Policies & Procedures Sub-Committee

At our meeting on 13th July, we received a presentation on the new Domestic Abuse Act and the new statutory definition. A brief guide that provides professionals with an introduction to autism, and suggests how they can ensure autistic people are involved in safeguarding enquiries about them was agreed and the DHSC - Supporting people living with dementia to be involved in adult SG enquiries was shared. A Commissioning, Procurement and Safeguarding Framework was shared and guidance "Deciding if you need to raise a safeguarding concern" was agreed. The new All Age Exploitation Screening Tool was shared.

Next meeting is Tuesday 12th October 2021

Learning & Improvement Sub-Committee

At our meeting on 15th July we heard about an example of good practice from our colleagues working in Birmingham, who had supported a young woman being trafficked and exploited. We all agreed it was helpful to hear real life examples of good practice and we hope to continue to collate and share positive case examples. We also discussed the Stephen SAR and how we can improve the use of the Mental Capacity Act and advocacy services. We discussed some research looking at the common themes across Safeguarding Adult Reviews and Domestic Homicide Reviews and considered the challenges of working with individuals who self-neglect.

Next meeting is Thursday 7th October 2021

West Midlands Adult Safeguarding Policy & Procedures

Adult Safeguarding: Multi-Agency Policy and Procedures for the protection of adults with care and support needs in the West Midlands

The Procedures can be viewed [HERE](#)



Sue Ross
SSAB Independent Chair
ssab@solihull.gov.uk
0121 788 4392



Rachel Swain
SSAB Business Manager
rachel.swain@solihull.gov.uk
0121 788 4376



Demi Williams
SSAB Management Assistant
demi.williams@solihull.gov.uk
0121 788 4387



Rhys Cartwright
SSAB Administrator
rhys.cartwright@solihull.gov.uk
0121 788 4390

SSAB WEBSITE: www.ssab.org.uk



Follow us on Twitter [@SolihullSAB](https://twitter.com/SolihullSAB)

SSAB TRAINING INFORMATION - ssab@solihull.gov.uk

To report adult abuse

Tel: 0121 704 8007 (office Hours)
0121 605 6060 (out of hours)
101 – Police

On-Line Referral Form

Public - SSAB WEBSITE: www.ssab.org.uk

SSAB TRAINING INFORMATION/BOOKINGS - ssab@solihull.gov.uk

Professionals - [Click here to report adult abuse](#)