

## WELCOME to the SSAB Newsletter

Local News	Page 1
World Elder Abuse Awareness Day	Page 2
Training	Page 3
Making Safeguarding Personal	Page 4
Domestic Abuse	Page 5-7
ADASS	Page 7
National Policies, Procedures & Guidance	Page 8-10
Board & Sub-Committee News	Page 11
Contact Details	Page 12

## LOCAL NEWS

We are delighted to confirm the appointment of **Sue Ross** as our **new Independent Chair of Solihull Adult Safeguarding Board**.

Sue joins us after recently completing her term of office as Independent Chair in nearby Oxfordshire, bringing a great wealth of experience, having held permanent and interim appointments at Director and Chief Executive level in Local Government & the NHS. This includes as a Director of Adult Social Services, Director of Children's Services, and the Chief Executive of a Primary Care Trust.

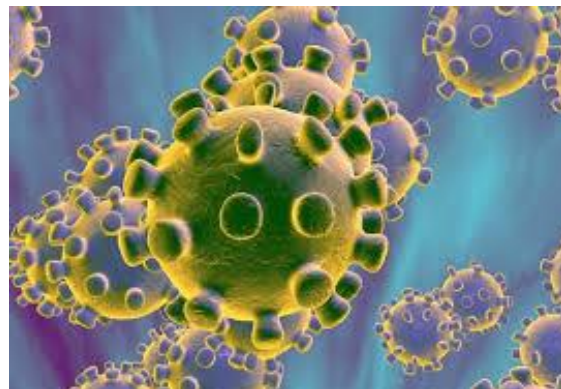
We are also delighted to confirm **Rachel Swain** has been appointed as the **New SSAB Business Manager**. Rachel will be taking up this position on the 12th July.

Rachel has been with the SSAB Business Team as the Development Officer for over 2 and half years and prior to this working in SMBC's One Front Door and the Safeguarding Team.

## Covid-19 – Coronavirus

In these challenging and unprecedented times, we would like to remind everyone of the importance of continuing to be vigilant about safeguarding.

Safeguarding should remain a high priority and if you have any concerns an adult with care and support needs is being abused or at risk of abuse – please report your concerns to Adult Social Care on **0121 704 8007** or if someone is in immediate danger call the police.



## Tablet Loan Scheme – Let's Get Digital!

[Age UK Solihull](#) are currently running a project, which provides people with the opportunity to loan a touchscreen tablet with support provided by a Volunteer Digital Champion.



The aim of the project is to support people to develop digital skills and to access the internet in order to reduce the risk of social isolation and loneliness. The project aims to help adults of any age who meet one or more of the following criteria:

- Lonely or isolated
- Has mobility difficulties
- Has a physical or mental health condition
- Is a carer

The project has 3 tablets available for loan soon, with up to 7 more expected to become available over the next few months.

As this is a small scheme, Age UK Solihull would like referrals from partner organisations. Please provide the person's name and phone number and brief reasons why they would be suitable for the scheme. Please also confirm they would be happy to be contacted by Age UK Solihull.

Email [Catherine.gulati@ageuksolihull.org.uk](mailto:Catherine.gulati@ageuksolihull.org.uk) or Call 07397 718455

Please also make referrals for people who need help with their own tablet or computer, as they may be able to help with this.

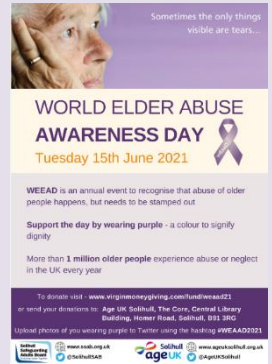


## World Elder Abuse Awareness Day (WEAAD) Tuesday 15<sup>th</sup> June 2021

Despite these continued strange times we are living in, we would like to invite you and your residents to take part in this year's World Elder Abuse Awareness Day on **Tuesday 15 June**.

Each year Solihull Safeguarding Adults Board works with Age UK Solihull to raise awareness of adult abuse, and we would like to ask if you would help us raise awareness by wearing purple or organising purple themed events - purple being the colour for dignity - to raise money for Age UK Solihull, to help them continue their work in helping older people in this borough.

It's estimated that around 1 million older people suffer abuse each year in the UK. With the 'lockdown', the issue is exacerbated, as many vulnerable people, who would normally have a support network around them, protecting them from abuse, are not around to shield them from scammers and the like. Abuse in the home has also been highlighted in the 'Coronation Street' storyline, where Yasmeen was being abused by her husband Geoff – both aged in their 60s.



You can participate by wearing purple, run purple themed events, or maybe baking and selling purple cakes – whatever works for you! We'd like to hear about what you are doing and if you have any photos of your activities, please email them to [ssab@solihull.gov.uk](mailto:ssab@solihull.gov.uk) or [events@ageuksolihull.org.uk](mailto:events@ageuksolihull.org.uk) send and with your permission, we will share them on Social Media. Or you can post them on Twitter yourself using the hashtag [#WEAAD2021](https://twitter.com/WEAAD2021) tag us in [@SolihullSAB](https://twitter.com/SolihullSAB) (and don't forget to 'follow' us!)

Last year, the event raised £712, we do hope to match or even exceed this, this year. **If you are able to raise some money please donate it via this [Virgin Money Giving page](#)**

## WORLD ELDER ABUSE AWARENESS DAY - DOMESTIC ABUSE & OLDER WOMEN

**FREE WEBINAR TRAINING (via MS Teams)**

**Tuesday 15<sup>th</sup> June 2021 – 10:30am to 12:00pm**

As part of our support for WEAAD, on 15<sup>th</sup> June, SSAB would like to invite you to a webinar led by Birmingham & Solihull Women's Aid on Domestic Abuse & Older Women

This will be an interactive and informative session covering:

- Myth busting around domestic abuse and older women
- Some of the barriers to accessing support
- How to ask direct questions
- What is important to older survivors of domestic abuse
- Anonymised examples from Women's Aid work with older survivors.

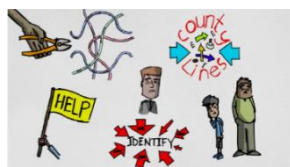
[Click here to book via Eventbrite](#)

If you have any queries please contact [ssab@solihull.gov](mailto:ssab@solihull.gov)

## TRAINING

### Videos

#### [NCLCC – County Lines Awareness Video](#)



NCLCC - County Lines Awareness Video

This 10-minute video discusses the County Lines methodology and how this is affecting Children and Vulnerable adults, Partners, Law

Enforcement, and society.

#### [NCLCC - National Referral Mechanism Awareness Video](#)

This video has been made in collaboration with Sketchups and focuses on the National Referral Mechanism (NRM) including the process, when to apply and how decisions are made.



NCLCC - National Referral Mechanism - Awareness Video

### On-Line Resources

#### SCIE – On-Line Resources

- [When People with Dementia Refuse Services](#)

Challenging situations can arise when a person with dementia refuses help. SCIE's updated guidance identifies some of the most common difficult situations and solutions that can arise when supporting a person with dementia who is refusing help.

- [COVID-19: Supporting autistic people and people with learning disabilities](#)

SCIE have updated a series of resources for social workers, care staff, and for carers and family on supporting autistic adults and adults with learning disabilities during the coronavirus pandemic.

### Book Review

#### **Sexual Violence Against Older People (Victims, Culture and Society)**

Research on sexual violence has been a growing area of academic study since the 1970s. However, the focus of these efforts has centred on younger women, leaving older women largely ignored in research. This book presents data from the first UK study to examine the extent, nature and impacts of sexual violence against people aged 60 and over.

**Chapter 1** examines the intersections of gender and ageism.

**Chapter 2** examines three overlapping but distinct field of enquiry – elder abuse, domestic abuse against older people and sexual violence against older people.

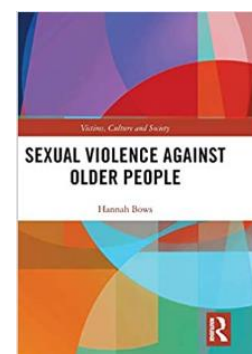
**Chapter 3** discusses the findings of analysis of the police recorded rape and sexual assaults against those aged 60 and over.

**Chapter 4** discusses findings from interviews with professionals who work with survivors of sexual violence.

**Chapter 5** reports findings from interviews with three older women survivors of sexual violence.

**Chapter 6** draws together the key issues.

*Sexual Violence against Older People* is vital reading for practitioners and policymakers, and those engaged in studies of criminology, health and nursing, social work, elder abuse, and violence against women.



# MAKING SAFEGUARDING PERSONAL

## Supporting people living with dementia to be involved in adult safeguarding enquiries

Research has shown that older adults with dementia are more likely to experience abuse and neglect than those without a diagnosis. People who are living with dementia are entitled to be free from abuse & neglect and where abuse is experienced, action should be taken to stop and prevent it.

The Care Act 2014 provides Local Authorities with a duty to safeguard adults. However, the needs of people with dementia will vary widely and in order to safeguard people with dementia effectively, practitioners need to be able to adapt their practice.

This year, the Office of the Chief Social Worker commissioned [this practice guidance](#), which explains what is known about the abuse & neglect of people who are living with dementia, and identifies principles & suggestions for good practice. The guidance is aimed at social workers however will be of value to all professionals involved in safeguarding adults who are living with dementia.



Supporting people living with dementia to be involved in adult safeguarding enquiries

Published 31 March 2021

## Real Safeguarding Stories

Real Safeguarding Stories is a video resource for safeguarding professionals and the wider community where survivors' stories are central to tackling abuse in society.

Telling survivors' stories through anonymised, actor led videos is a compelling way to engage people on safeguarding issues. These videos, created by Bradford District Council and Collingwood Learning, explore issues such as drug abuse, online fraud, mental health, domestic abuse, and Hate Crime. They are also designed to help professionals reflect on how people can be best supported, for example by addressing the needs of the carer, or by making safeguarding personal.



[Visit the Real Safeguarding Stories website here](#)

## DOMESTIC ABUSE

### Domestic Abuse Bill update

The Domestic Abuse Bill passed both Houses of Parliament and was signed into law on 29 April 2021.

These are the key changes the new Act will deliver:

- A legal definition of domestic abuse which recognises children as victims in their own right.
- A domestic abuse commissioner to stand up for survivors and domestic abuse services.
- A legal duty on councils to fund support for survivors in 'safe accommodation'.
- New protections in the family and civil courts for survivors – including a ban on abusers from cross-examining their victims, and a guarantee that survivors can access special measures (including separate waiting rooms, entrances and exits and screens).
- New criminal offences – including post-separation coercive control, non-fatal strangulation, threats to disclose private sexual images.
- A ban on abusers using a defence of 'rough sex'.
- A guarantee that all survivors will be in priority need for housing and will keep a secure tenancy in social housing if they need to escape an abuser.

### Safe Lives report on Transgender Victims' and Survivors' Experiences of Domestic Abuse

On 31<sup>st</sup> March, which marks International Trans Day of Visibility each year, [Safe Lives](#) released a new briefing exploring the experiences of transgender victims and survivors of domestic abuse.



Their briefing shows that trans victims/survivors experience specific types of abuse that can be linked to their trans identities, and that they also experience large numbers of additional needs in other areas, particularly mental health. [To read the briefing in full click here.](#)

### Multi Agency Risk Assessment Conference (MARAC)

In Solihull, numbers of referrals to MARAC have been dropping in recent months; this is despite reports of domestic abuse to police remaining high. Below is an overview of what MARAC is and what it aims to do, as well as a link to the West Midlands MARAC operating protocol.

#### What is a MARAC?

A Multi Agency Risk Assessment Conference (MARAC) is a meeting where information is shared on domestic abuse cases deemed high risk. Representatives of local police, health, child protection, housing practitioners, Independent Domestic Violence Advisors, probation, and other specialists may attend.

The meeting combines up to date risk information with a comprehensive assessment of a victim's needs and links them, their children, and the perpetrator to appropriate services.

The victim does not attend the meeting but is usually represented by an Independent Domestic Violence Advisor who will speak to them before the meeting and be their 'voice', contributing on their behalf.

#### What is the aim of MARAC?

MARAC aims to share information to increase the safety, health and wellbeing of victims and their children. The primary focus is to safeguard the adult victim, but it will also make links with relevant agencies and services to safeguard children and manage the behaviour of the perpetrator.

At the heart of a MARAC is the working assumption that no single agency or individual can see the complete picture of the life of a victim, but all may have insights that are crucial to their safety. It aims to support the victim and their children whilst also determining the level of risk posed by the perpetrator, both to the individuals involved and to the wider community.

The multiagency meeting will also construct a safety plan to provide professional support to all of those at risk, and to reduce the risk of harm. This could include emotional support for the victim or the children, supporting them in accessing safe accommodation or moving home or supporting them through the Criminal Justice System.

In addition, MARAC seeks to improve agency accountability and improve support for staff involved in high-risk domestic abuse cases.

### Who can be referred to MARAC?

Anyone aged 16 or over can be referred to MARAC. The government definition of domestic abuse acknowledges that young people can be both victims and perpetrators.

A MARAC perpetrator can be a partner from an intimate relationship, a sibling, parent, adult child, grandparent, in-law or step family member.

In cases of honour-based crime, a perpetrator may also be an aunt, uncle, cousin, or wider family member.



[Click here for the West Midlands MARAC Operating Protocol.](#)

### Solace launches 'Supporting Older Survivors' toolkit for professionals

Solace has developed a comprehensive toolkit for professionals in a range of agencies to understand the dynamics of domestic abuse in relation to older people and develop guidance that deals with the challenges and complexities of working with this client group.

Older survivors are more likely to have been living with abuse for many years before having the opportunity to seek help. Almost half a million people aged over 65 will experience some form of abuse or neglect (*Age UK*). In the UK, 1 in 4 domestic homicides involves a victim aged 60+ despite older people only making up 18% of the population.



Judith Banjoko, Director of Services at Solace, said:

“The Supporting Older Survivors’ Toolkit addresses the issue of older survivors not getting their needs met in generic services, barriers in disclosing the abuse and accessing support, myths and misconceptions, and the ways trauma can impact an individual. The toolkit also provides guidance on referral processes and support available, safety planning, and best practices in working with older survivors.”

[You can access the toolkit from our website by clicking here](#)

## Domestic Abuse Codeword Scheme

On Thursday 14 January, the Home Office has launched a [domestic abuse codeword scheme](#) in thousands of pharmacies across the UK. The Ask for ANI codeword scheme allows those at risk or suffering from domestic abuse to discreetly signal to pharmacy staff that they need help accessing support. A trained pharmacy worker will offer a private space where they can understand if the victim needs to speak to the police or would like help to access support services, such as a national or local domestic abuse helpline.

You may want to use the codeword social media asset and suggested posts, alongside the #YouAreNotAlone hashtag, on your channels to help raise awareness:

[Click here for some resources to share on social media, from the Home Office](#)

For more information, please visit [www.gov.uk/domestic-abuse](http://www.gov.uk/domestic-abuse) or email [AskforANI@homeoffice.gov.uk](mailto:AskforANI@homeoffice.gov.uk)

## ADASS

### ADASS Advice Note - Safeguarding Adults during the Covid Pandemic

This advice note has been developed for ADASS members. It is intended to help those who hold legal responsibility as the Director of Adult Social Services, as well as other senior members of their staff, such as Principal Social Workers, in understanding and responding to the safeguarding issues that have been highlighted by the current pandemic.

It is important to understand that the 'easements' provided by the Coronavirus Act 2020 did not change or dilute safeguarding duties. Indeed, professional concerns about the impact of the lockdown on people's wellbeing have increased.

If you would like to see a copy of this Advice Note please contact the SSAB Business Team [ssab@solihull.gov.uk](mailto:ssab@solihull.gov.uk)

### Top Tips for Directors Dealing with Allegations against People in a Position of Trust

The Independent Inquiry into Child Sexual Abuse (IICSA) identified that when information about People in a Position of Trust (PiPoT) was disclosed as part of the Inquiry and shared with the relevant local authority, the response was very variable.

In response to this, the Safeguarding Adults Policy Network has developed a [Top Tips note for directors on dealing with allegations against PiPoT](#), which draws on the Manchester and wider North West ADASS policies.





## National Policies, Procedures and Guidance

### **NHS announce Learning Disability Mortality Review Update**

A programme aimed at improving the lives of people with a learning disability is set to specifically incorporate autistic people in their efforts to drive improvements in care, the NHS has announced.

The learning from life and death reviews programme ([LeDeR](#)) reviews deaths and mortality rates involving those with a learning disability in order to better understand their health outcomes and how improvements can be made.

These LeDeR reviews can give greater understanding to the health challenges faced by those with a learning disability, who can often have worse health outcomes than those without.

Working with stakeholders, including bereaved families, people with a learning disability and autistic people over the past 12 months, the NHS has developed a new policy, which will focus not only on completing reviews but on also ensuring that local health and social care systems implement actions at a local level to improve and save lives.

[To read the new policy click here](#)

### **Analysis of Safeguarding Adult Reviews: April 2017 - March 2019** (published by the Local Government Association December 2020)

This report was commissioned by CHIP – the sector-led Care and Health Improvement Programme, co-produced and delivered by the Local Government Association and the Association of Directors of Adult Social Services in England.

It is the first national analysis of Safeguarding Adult Reviews (SARs) in England. Its purpose was to identify priorities for sector-led improvement.

Material for analysis was collected from Safeguarding Adult Boards (SABs), 98% of which (129/132) responded to requests for published and unpublished reviews completed between 1<sup>st</sup> April 2017 and 31<sup>st</sup> March 2019. In total 231 SARs are included in the analysis. 22% of SABs (29/132) did not complete a SAR during this period.

The findings from this review were clustered into five main categories:

- SAB practice on the commissioning and conduct of SARs
- Supporting sector-wide learning from SARs
- Support for adult safeguarding practice improvement
- Revision to national policy/guidance and
- Further research to inform sector-led improvement initiatives.

[Click here to read the report](#) (Caution - it is 245 pages)

### **Protect, Respect, Connect – Decisions about living and dying well during COVID-19** (published by the Care Quality Commission)

From the beginning of the COVID-19 pandemic, there were concerns that ‘do not attempt cardiopulmonary resuscitation’ (DNACPR) decisions were being made without involving people, or their families and/or carers if so wished, and were being applied to groups of people, rather than taking into account each person’s individual circumstances.

In October 2020, the Department for Health and Social Care commissioned CQC to conduct a special review into these concerns. The review identified there needs to be a focus on:

- Information, training, and support
- A consistent national approach to advance care planning
- Improved oversight and assurance

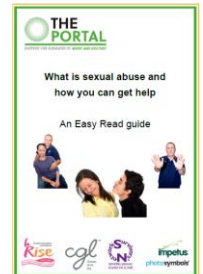
[To read the report click here](#)

## West Midlands Sexual Assault and Abuse Strategy 2020-23 and Solihull Sexual Assault and Abuse Needs Assessment - (Copies available from Caroline Murray, SMBC Domestic Abuse Co-ordinator - email [caroline.murray@solihull.gov.uk](mailto:caroline.murray@solihull.gov.uk))

Sexual assault & abuse are terms used to describe a broad range of physical, visual, and verbal sexual activities, which are unwarranted and take place without consent. Consent, power, and control are at the heart of the continuum of sexual assault & abuse. Sexual abuse is often a hidden crime and a form of gender inequality, as the majority of victims are female. However, anyone, including children, can be and are subjected to sexual abuse. Sexual abuse is a crime with far reaching consequences for the individuals, families, and community. The sexual abuse system is complex, and victims-survivors say that they find it difficult to access help at times when they need them most.

This is Solihull's first sexual assault & abuse strategy, which is aligned to regional and national approaches.

[What is Sexual Abuse and How You Can Get Help? - an Easy Read guide](#)



### Older people: Care and Self-funding Experiences Research Report and Findings (by Lizzie Ward, Mo Ray and Denise Tanner published in December 2020)

This report highlights the main findings from a three year-participatory research project that explored how older people experience the process of finding and paying for personal care from their own resources in three local authority areas in England. The project was interested in examining the ethical and moral dimensions of self-funded care by bringing older peoples' experiences to the fore.

They contextualised the experiences of older self-funders by obtaining the views of stakeholders and family carers, giving a rounded picture of the risks and responsibilities associated with self-funded care from different perspectives.



- [Link to Full Report](#)
- [Link to Executive Summary](#)
- [Link to Briefing Self funders, the invisible lynchpin of the social care system](#)

### Safeguarding adults in care homes – (NICE guideline - Published: 26 February 2021)

This guideline covers keeping adults in care homes safe from abuse and neglect. It includes potential indicators of abuse and neglect by individuals or organisations and covers the safeguarding process from when a concern is first identified through to section 42 safeguarding enquiries.

There are recommendations on policy, training, and care home culture, to improve care home staff awareness of safeguarding and ensure people can report concerns when needed.

The guideline includes recommendations on:

- induction and training
- care home culture and management
- indicators of individual abuse and neglect
- immediate actions to take if you consider or suspect abuse or neglect
- how care home safeguarding leads and local authorities should respond to reports of abuse or neglect
- indicators of organisational abuse and neglect.

[Click here to access the guidance](#)  
(Caution – this is 94 pages long)

## **Direct Payments: Working or Not Working?** (Published by Think Local Act Personal)

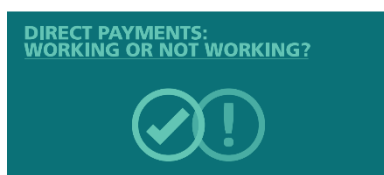
This resource is based on conversations during the first phase of the coronavirus pandemic. The conversations included colleagues in the Department of Health and Social Care, people who receive direct payments, those who support them and organisations that work in and around direct payment support locally, regionally, and nationally. Discussions were designed to make sure guidance for direct payment recipients and those they employ was co-produced, clear, and relevant.

At the heart of the conversations were consistent messages that people need their direct payment to work in the way originally conceived, not in the way they currently experience them. It became apparent that there is a gap between how direct payments are intended to support 'a good life' and the reality of a system that may have become unduly caught up in process.

This document is for:

- Direct payment recipients
- Social work practitioners
- Commissioners and
- Staff responsible for designing and managing direct payments procedures.

[To read the report click here](#)



## **Supporting people living with dementia to be involved in adult safeguarding enquiries** (published by the Department of Health and Social Care)

It is estimated that 850,000 people in the UK have dementia, with one in 14 adults over 65 being affected.

Research shows that older adults living with dementia are at greater risk of abuse and neglect than those without a diagnosis. Such abuse may include psychological, physical, financial, or sexual abuse and may take place in the community or in care homes.

People central to the adult safeguarding process should be involved in the enquiry and be given choice and control about how their case is managed. Dementia can cause difficulties with memory, thinking, language and problem-solving. People living with dementia may find it difficult to report abuse or to make choices about how they would like their situation to be managed. Because of this, thought needs to be given as to how individuals can be supported to make decisions within enquiries, in line with the requirements of the Mental Capacity Act 2005.

The research found - higher levels of abuse were found in cases where the person living with dementia was perceived by carers to be resistant to care, irritable or displaying challenging behaviours. Higher levels of abuse were also found where family carers had experienced emotional distress, anxiety, or depression.

When a safeguarding enquiry is made, practitioners must consider how the person in question views the alleged abuse or neglect and should ensure that they are central to decision-making. Such decisions involve thinking about risk and making proportionate judgements about it. However, research shows that people living with dementia, carers and professionals tend to interpret risk in different ways and that people living with dementia rarely use the term 'risk' when talking about their situation.

This guidance sets out good practice for working people living with dementia, suggesting ways in which professionals can provide quality safeguarding and best involve people in decision-making.

[To read the guidance click here](#)

## BOARD AND SUB COMMITTEE NEWS

### Safeguarding Adults Board Meeting

The Board's **priorities for 2020-21** are:

- **Exploitation and Transitions**
- **Safeguarding Adult Reviews and**
- **Strengthening the links to CSP, LSCP and H&WBB**

At the Board meeting on the 4<sup>th</sup> March 2021 the Board received a presentation from CQC on their inspection work last year, their review of the use of restraint, seclusion and segregation in care services for people with a mental health condition, a learning disability or autistic people, and details about their review of DNACPR decisions during the COVID-19 pandemic.

The Board agreed the three priorities detailed above for this year and received an update on how our SAR recommendations are being monitored. West Midlands Fire Service gave us an update - one year on from their safeguarding review.

**Next Board meeting is 3<sup>rd</sup> June 2021**

#### Engagement & Prevention Sub-Committee

At our meeting on 15<sup>th</sup> April we discussed the Safeguarding things to look out for as we come out of lockdown, as professionals and practitioners start to have more contact, and particularly face to face contact with adults who had been shielding, or who are living in residential or nursing care homes or who may have cancelled their service, so we need to be especially alert to possible indicators of abuse or neglect.

We agreed how to mark World Elder Abuse Awareness day this year and agree to set up a small group to look at a 'safe place' scheme in Solihull. We also received feedback on the Self Funder Research and how the SSAB Business Team is reviewing the website.

**Next meeting is Thursday 22<sup>nd</sup> July 2021**

#### Policies & Procedures Sub-Committee

At our meeting on 13<sup>th</sup> April we looked at some local guidance on "what constitutes a safeguarding concern" and a Brief Guide to Safeguarding Practice when someone has Autism.

We also looked at SMBC's guidance on Large Scale Enquiries. We agreed our workplan for 2021-22 which includes looking at the CQC Closed Cultures work, When is a Fall a Safeguarding Concern and the implications of the Domestic Abuse Bill.

**Next meeting is Tuesday 13<sup>th</sup> July 2021**

#### Performance & Audit Sub-Committee

At our meeting on 20<sup>th</sup> April we reviewed the performance dashboard for quarter 4 as well as end of year NRM data. We also discussed having some time at a future meeting focussing on domestic abuse data and what this is telling us about the picture in Solihull.

We agreed our workplan for 2021-22 which includes looking at single agency audits, increasing the dashboard data set to consider additional protected characteristics, and how we can capture Making Safeguarding Personal data across the partner organisations.

**Next meeting is Tuesday 20<sup>th</sup> July 2021**

#### Learning & Improvement Sub-Committee

At our meeting on 22<sup>nd</sup> April we considered the Stephen SAR recommendation 6: promoting the benefits of using the Mental Capacity Act 2005.

We also discussed the Domestic Abuse Bill and its implications for partners. We agreed our workplan for 2021-22 which will include considering the outcomes of the Exploitation Reduction Self-Assessment, looking at joint opportunities for learning from SARs, CSPRs and DHRs and a focus on self-neglect.

**Next meeting is Thursday 15<sup>th</sup> July 2021**

## West Midlands Adult Safeguarding Policy & Procedures

### Adult Safeguarding: Multi-Agency Policy and Procedures for the protection of adults with care and support needs in the West Midlands

The Procedures can be viewed [HERE](#)



**Sue Ross**  
SSAB Independent Chair  
[ssab@solihull.gov.uk](mailto:ssab@solihull.gov.uk)  
0121 788 4392



**Sue Walton**  
SSAB Business Manager  
[susan.walton@solihull.gov.uk](mailto:susan.walton@solihull.gov.uk)  
0121 788 4392



**Rachel Swain**  
SSAB Development Officer  
[rachel.swain@solihull.gov.uk](mailto:rachel.swain@solihull.gov.uk)  
0121 788 4376



**Demi Williams**  
SSAB Management Assistant  
[demi.williams@solihull.gov.uk](mailto:demi.williams@solihull.gov.uk)  
0121 788 4387



**Rhys Cartwright**  
SSAB Administrator  
[rhys.cartwright@solihull.gov.uk](mailto:rhys.cartwright@solihull.gov.uk)  
0121 788 4390

SSAB WEBSITE: [www.ssab.org.uk](http://www.ssab.org.uk)



Follow us on Twitter [@SolihullSAB](https://twitter.com/SolihullSAB)

SSAB TRAINING INFORMATION - [ssab@solihull.gov.uk](http://ssab@solihull.gov.uk)

### To report adult abuse

**Tel: 0121 704 8007 (office Hours)**  
**0121 605 6060 (out of hours)**  
**101 – Police**

**On-Line Referral Form**

**Public - SSAB WEBSITE: [www.ssab.org.uk](http://www.ssab.org.uk)**

**SSAB TRAINING INFORMATION/BOOKINGS - [ssab@solihull.gov.uk](http://ssab@solihull.gov.uk)**

**Professionals - [Click here to report adult abuse](#)**