



WORLD DAY AGAINST TRAFFICKING IN PERSONS NEWSLETTER

In this newsletter

Solihull LSCP and SSAB have produced this newsletter to provide a range of national and local resources and guidance all in one place to coincide with World Day Against Trafficking in Persons on 30th July 2021.

In this newsletter you will find:

- Definition of trafficking
- The NEW Solihull All Age Exploitation Reduction Strategy
- Exploitation Screening tools
- Local resources and campaigns
- National resources from NWG, Missing People and others

As well as many more resources and guidance.

World Day Against Trafficking in Persons Day 2021



On Friday 30th July 2021 it is World Day Against Trafficking in Persons, which aims to highlight the issues surrounding human trafficking.

Trafficking in persons is a serious crime and a grave violation of human rights. Every year, thousands of men, women and children fall into the hands of traffickers, in their own countries and abroad. Almost every country in the world is affected by trafficking whether as a country of origin, transit or destination for victims.

Most countries have national human trafficking laws but still people continue to be trafficked. To fight this heinous crime, in 2013 the United Nations General Assembly declared the 30 July as the World Day Against Trafficking in Persons.

Anyone can be exploited no matter what culture, ethnicity, religion, whether male or female, child or adult and from any background.

[For more information on the awareness day please click here](#)

What is Trafficking?

The following definition of trafficking is from [Unseen, a UK-based anti-slavery charity](#).

‘Human trafficking is the movement of people by means such as force, fraud, coercion or deception, with the aim of exploiting them. It is a form of modern slavery.’

Human trafficking is a crime. It does not always involve international transportation. Trafficking in the UK includes commercial, sexual and bonded labour. Trafficked people have little choice in what happens to them and often suffer abuse due to violence and threats made against them or their families. In effect, they become commodities owned by traffickers, used for profit.’

Modern Slavery and Trafficking

The Home Office have published a [report](#) looking at Modern Slavery and Trafficking and identifying 17 typologies of Modern Slavery Offences in the UK. They have also produced a [video](#) which provides information on Modern Slavery and how to spot potential victims.



Labour exploitation	Domestic servitude
<ul style="list-style-type: none"> • Victims exploited for multiple purposes in isolate environments • Victims work for offenders • Victims work for someone rather than offenders 	<ul style="list-style-type: none"> • Exploited by partner • Exploited by relatives • Exploiters not related to victims
Sexual exploitation	Criminal exploitation
<ul style="list-style-type: none"> • Child Sexual Exploitation—group exploitation • Children Sexual Exploitation—single exploiter • Forced sex work in fixed location • Forced sex work in changing location • Trafficking for personal gratification 	<ul style="list-style-type: none"> • Forced gang-related criminality • Forced labour in illegal activities • Forced acquisitive crime • Forced begging • Trafficking for forced sham marriage • Financial fraud (including benefit fraud)

Solihull All Age Exploitation Reduction Strategy 2020-22

In December, Solihull launched its All Age Exploitation Reduction Strategy. The strategy sets out the partnership approach to identifying exploitation at the earliest opportunity and ensuring that individuals, their families and support networks access the right services at the right time. [The strategy can be found here](#)

A presentation has been developed to accompany the strategy to summarise its aims and highlight the relevance of the document to those who may come into contact with individuals who may be at risk of or being exploited. [The presentation can be found here](#)

Solihull Exploitation Capability Framework

This framework identifies the core capabilities of: knowledge, skills and understanding, for four key groups of learners ranging from those who have contact with the general public, to managers with responsibility for supporting and supervising practitioners who provide

All Age Screening Tool

In March 2021, the Solihull All Age Exploitation Procedures were launched with 2 separate screening tools – one for under 18's and another for over 18's. Each was very different – one being based on a regional tool and quite lengthy, the other being developed locally and more concise.

It was agreed when the Procedures were being designed that where possible, tools would be developed for all ages and not specific to children and adults, unless required in practice or by legislation or statutory guidance.

A working group of professionals from Children and Adult Services, West Midlands Police, Schools and Health Providers have worked with the Safeguarding Adult Board & Children's Safeguarding Partnership to develop this new tool. [This NEW tool should now be used.](#)

[To support the new tool guidance is also available.](#)

Language Matters

When discussing exploitation the language we use matters. Phrases such as “provocative”, “making lifestyle choices” and “refusing offers of support” fail to take into account the extent to which a person has been affected by the abuse that they have experienced.

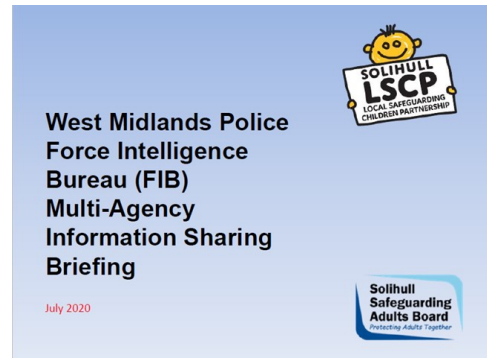
Solihull Safeguarding Adults Board and Solihull Local Safeguarding Children Partnership have developed some guidance for staff around what language is appropriate when discussing exploitation, and what language can be unhelpful.

[Click here to access the document](#)



West Midlands Police FIB Form and Briefing

This PowerPoint has been developed by Solihull LSCP and SAB to explain when the West Midlands Police Force Intelligence Bureau (FIB) form should be used. A link to the FIB form can be found [here](#), and the PowerPoint can be found [here](#).



Adult Grooming—One Minute Guide



Grooming is a form of abuse that involves manipulating someone until they're isolated, dependent, and more vulnerable to exploitation.

When most people think about grooming, they think about children. But adults are vulnerable to grooming too.

Grooming can lead to many different types of harm, including modern slavery, physical, sexual and financial abuse.

[Learn to spot the signs of adult grooming here](#)

Is My Home Being Invaded?

The SSAB and LSCP are pleased to launch two documents for anyone who is living independently, their families and supporters. It is for people to share and go through together and talk about. This leaflet talks about a type of criminal activity that happens when a person's home is taken over by others for things like producing, storing and supplying drugs and/or weapons, having parties and encouraging sexual activity. You may have heard this type of activity referred to as 'Cuckooing', however we are supporting the NWG movement to stop the use of this term as it desensitises people from understanding the abuse that someone suffers when their home—a place they should feel safe and in control—is taken over by abusers.

This leaflets helps you to think about what to look out for and what to do if this happens to you or someone you know. [The leaflet can be found here](#) and there is also an [easy to read version here](#)



The NWG Network Toolkit

‘Criminal, Civil and Partnership Disruption Options for Perpetrators of Child and Adult Victims of Exploitation’

The Toolkit details options available to disrupt perpetrators, using a variety of different powers and tools, which are available through a multi-agency approach. [The NWG Toolkit can be found here](#)

“Something doesn’t feel right”

Guidance on Professional Curiosity and Persistence

We know that it is better to help individuals and families requiring our support as early as possible, before issues get worse. That means that all agencies and practitioners need to work together—the first step is to be professionally curious.

Professional curiosity is a recurring theme from Safeguarding Adults Reviews completed both locally in Solihull (John, Rachel, Graham, Peter and Stephen SARs) as well as regionally and nationally. [The guidance can be found here](#)

Not Just a Thought...

The ‘Not Just a Thought...’ communication model has been co-produced with 75 children and young people who worked with professionals from the NHS, Social Care, Education, Police and the Charitable Sector. The model supports practitioners, children and young people to work together, to share their thoughts that will help reduce abuse. In the spirit of keeping the conversation going, the website notjustathought.org.uk is open to all ages and the language used will be child and young person friendly.

Young people at risk of extra-familial harm

[Assessment and intervention planning for young people at risk of extra-familial harm: A practice guide](#)

This document has been designed by the London Borough of Hackney in partnership with the University of Bedfordshire’s Contextual Safeguarding Unit to support practitioners to undertake assessments which are holistic in nature – taking into account both the context of children’s experiences within their family home and in other social spaces. It supports practitioners to:

- Assess the risk of extra familial harm to a young person;
- Consider the needs of a young person subject to extra-familial risk; and
- Make recommendations/plan for on-going work which addresses extra-familial risk of harm.

Victim Support

Victim Support are a charity set out to help anyone affected by crime, not only those who experience it directly, but also their friends, family and any other people involved.

It doesn't matter when the crime took place – individuals can receive support at any time, and for however long you need it.

This support is based on an individual needs assessment and support plan, which is designed to empower an individual to move forward from the crime. If victim support are not the right service, they will signpost and refer to other agencies who can offer the right support. The team provide a wide range of specialist services that help people affected by all types of crime including, but not limited to, burglary, hate crime, fraud, theft, domestic abuse, rape and sexual assault, exploitation and terrorism.



'Trapped'

This short video has been developed to raise awareness of the criminal exploitation of young people and vulnerable adults. It tells the story of a boy who has been groomed by a drug dealer and then forced to sell drugs in another town. [Click here to access the video](#)

Solihull LSCP and SAB Dispute Resolution Procedures

Both the LSCP and SAB have developed procedures for practitioners to follow when there has been a professional disagreement. [Click here for the LSCP procedures](#) and [here for the SSAB procedures](#).

County Lines Awareness Video

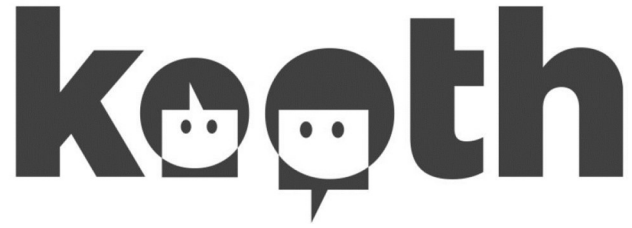
National County Lines Coordination Centre created a 10 minute video discussing the County Lines methodology and how this is impacting Children and Vulnerable adults, Partners, Law Enforcement and society. [Click here to watch the video](#)

NRM Awareness Video

Another video from the National County Lines Coordination Centre which focuses on the National Referral Mechanism (NRM) including the process, when to apply and how decisions are made. The NRM is a framework for identifying and referring potential victims of modern slavery and ensuring they receive the appropriate support. [Click here to watch](#)

Kooth

As a fully commissioned service, [Kooth.com](https://www.kooth.com) provides a free, safe, anonymous and non-stigmatised way for young people to receive advice and support online for all young people aged 11-25 years in Solihull. Staffed by fully trained and qualified team members, and available until 10pm each night, 365 days per year, it provides a much needed out of hours' service for advice and support. As well as 1:1 support, peer to peer support can also be accessed through our moderated message forums and online magazine.



Our experienced practitioners are available to provide emotional support to young people with a wide range of issues, from having a bad day to more serious issues such as bullying, stress, anxiety, depression, family relationships, sexuality, eating disorders, self-harm, exploitation, abuse etc. During such unprecedented times, lots of young people are also seeking support around isolation, predicted exam grades, change of life, their future outlook, employment options and fear of COVID19 to mention a few.

SafeCall

Are you a professional who thinks a child or young person that you are working with is being made to sell or transport drugs, or is at risk of being exploited? Are you working with a parent or carer of a child or young person that has found themselves caught up in this form of exploitation? SafeCall offers a non-judgemental, safe space for those affected by exploitation to talk about their experiences, offering reassurance, exploring choices and helping them to formulate a safety plan.

The SafeCall service will also reach out to a child or young person's parent or carer, offering them a chance to debrief, access emotional support and be guided on how to keep their family safe in future.

For information on how to use SafeCall please go to www.missingpeople.org.uk/safecall-service

Best Practice & Guidance for Using the UK's NRM

Every Child Protected Against Trafficking (ECPAT UK) have published [this webinar](#) for professionals. Best practice & guidance for using the National Referral Mechanism (NRM) – the UK's system for identifying and recognising victims of trafficking. In this webinar, you'll build your knowledge of the NRM, your statutory duties and best practice.

Expect Respect

Expect Respect is a prevention toolkit that will help you to lead sessions around healthy relationships for children and young people aged 4-18. It contains age-appropriate activities that can be used in a range of spaces, but it can also be used with adults. It will help you to hold conversations about the root causes of violence, and educate young people on gender-based violence. [Click here to access the toolkit](#)

For more information on how to become an expert respect advocate, with access to free training & support to use the tool kit [click here](#)

West Midlands Violence Reduction Unit Education Toolkit

This toolkit is one of the first working documents by the West Midlands Violence Reduction Unit, which is being shared in order to support their work with the education sector.

It is a collection of promising practice that aims to help schools support vulnerable children and to facilitate a trauma-informed approach to education. They hope it will provide a conversation starter and a foundation for the work to be undertaken by their education intervention advisers this academic year. [Click here to download the toolkit](#)



Evidence Based Approaches to Violence Reduction

The purpose of this document is to help you, as practitioners working locally, to understand three complementary evidence-based approaches to violence reduction. These aren't the only approaches you could use. There are other approaches that are also evidence based, like trauma-informed approaches and intelligence-led policing. There is no one 'best' approach, and all of these approaches have benefits and limitations.

[Click here to access](#)



“It was hard to escape”

The Child Safeguarding Practice Review Panel has published a national review, which aims to identify what might be done differently to protect children who are criminally exploited. This review sets out recommendations and findings for government and local safeguarding partners to protect children at risk of criminal exploitation. The review examines 21 cases where children died or were seriously harmed, in which criminal exploitation was a factor. The review identifies areas of innovative good practice and contains recommendations at local and national level. [The full report can be found here](#)

Learning from Rachel

SSAB have published a practice briefing surrounding the Rachel SAR. The review highlighted several findings and identified recommendations for professional working with those who are victims of exploitation. [The practice briefing can be found here](#)

#LookCloser

Young people are being exploited and are losing hope, but it's not always obvious. The Children's Society have developed the #LookCloser campaign, in partnership with the National County Lines Co-ordination Centre and British Transport Police, encouraging everyone to learn the signs of child exploitation and how to report it if worried.

Young people are groomed into exploitation and abuse both online and offline. They may be sexually abused, forced into labour, made to launder money for criminals through their own bank accounts, or coerced into committing crimes like transporting drugs or stealing from shops.

Buses, trains, trams and coaches are used to facilitate the movement of a young person when they're being exploited. Fast food outlets and roadside services may be used for amenities and food stops. Hotels, salons and car washes may be places where exploitation happens 'behind closed doors'.

For more information and what signs to look out for please [visit the Children's Society website here](#)

Exploitation can
happen anywhere

**Don't
wait.
Report
it.**

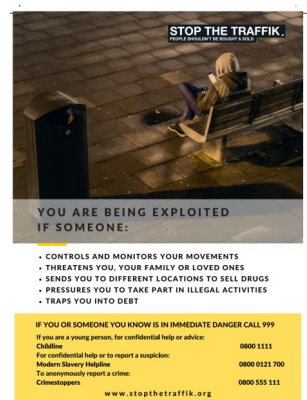
NSPCC: Learning from Case Reviews

NSPCC Learning has published a [briefing](#) based on learning from 15 case reviews from the national repository published between 2018 and 2019, featuring children aged 13-18. The case reviews highlight that: practitioners sometimes struggle to work with teenagers who are experiencing complex issues; interventions can focus on tackling challenging behaviour, rather than exploring the underlying causes and risk factors; and practitioners sometimes lose sight of the fact that teenagers are children in need of protection.

Posters

STOP THE TRAFFIK have created materials that will help you raise awareness of the most common forms of human trafficking and modern slavery.

The downloadable posters and leaflets highlight signs of exploitation to those who may be victims of trafficking and signpost them to organisations in the UK for help and support. Each poster and leaflet has been created in a variety of languages for the most vulnerable communities. [Click here to access them all, including these below](#)



Websites

Thinkuknow

Thinkuknow is the education programme from NCA-CEOP, a UK organisation which protects children both online and offline. www.thinkuknow.co.uk

Missing People

Missing People aim to improve the support and services available to missing children, adults and their families. www.missingpeople.org.uk

PACE

Pace supports parents and carers whose children are being exploited by offenders outside of the family. <https://paceuk.info/>

Bridging the Gap

BRIDGING THE GAP
TRANSITIONAL SAFEGUARDING
AND THE ROLE OF SOCIAL WORK WITH ADULTS



A knowledge briefing

This briefing is for people involved in safeguarding adults and social work. It is relevant to practitioners, senior leaders and other social care professionals providing support across local safeguarding partnerships. This briefing:

- describes what transitional safeguarding is, why it is needed and how the contribution of adult social work is essential to developing and embedding a more transitional approach to safeguarding young people into adulthood
- focuses on sexual and criminal exploitation
- aims to inform, inspire change and celebrate the contribution of the adult social work sector.

[Click here to read the document in full](#)

Training Opportunities

Solihull LSCP Module 5a

The LSCP offer a '[Child Exploitation Awareness](#)' half day course, aimed at those who work with children and young people and who are responsible to identify and respond to child exploitation. Dates are released every month and practitioners who work with both children and adults are able to register on this course.

Contact Us



To contact Solihull LSCP:

By email: lscp@solihull.gov.uk

By phone: 0121 788 4325

Website: solihulllscp.co.uk



To contact Solihull SAB:

By email: ssab@solihull.gov.uk

By phone: 0121 788 4392

Website: ssab.org.uk