

SSAB NEWSLETTER



ISSUE 44 | August 2023



INSIDE THIS ISSUE

- **Local News**
 - Learning from Sam Briefing
 - Guide to Staying Safe Online
 - WEAAD Update
 - Multi-Agency Risk Management Guidance
 - Safeguarding Practice Learning Forum
 - MAACE Leaflet
- **National News**
 - West Midlands Gambling Harms Clinic
 - Safe Care at Home Review
 - As One Door Closes
- **Equality, Diversity & Inclusion**
 - LGBTQ+ Care in Later Life – A Learning Framework
- **Learning and Development**
 - SSAB Training (September – October)
 - Including Contextual Safeguarding in Individual Assessments
 - Hourglass Webinars
 - Learning from Domestic Homicide Reviews Training
- **Making Safeguarding Personal**
 - Safeguarding Adults Week
 - Discriminatory Abuse Resources
- **Board & Sub-Committee News**

Contact Info:



ssab@solihull.gov.uk

Connect with Us:



[Website](#)



[Twitter](#)



[YouTube](#)

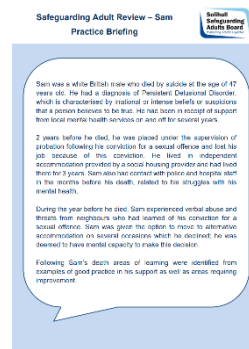
LOCAL NEWS

Learning from Sam Briefing

Sam was a white British man who died by suicide at the age of 47 years old. He had a diagnosis of Persistent Delusional Disorder, which is characterised by irrational or intense beliefs or suspicions that the person believes to be true.

A safeguarding adult review referral was received by SSAB, and although Sam's case did not meet the criteria for a review, learning was identified from both the good practice and areas where practice could be improved. This short briefing aims to share the learning as well as signpost to useful resources.

[Find the briefing on our website](#)



Guide to Staying Safe Online

Social media offers the opportunity to connect with others, to be creative, and to discover new things. However, being able to keep up to date with technology can be challenging.

The resources and tips in this guide are intended to help everyone use the internet safely, responsibly, and positively. This guide has recently been updated with information on technology enabled domestic violence and abuse.

[Find the guide on our website](#)



WEAAD Update

On 15th June 2023, [Age UK Solihull](#) teamed up with Solihull Safeguarding Adults Board Business Team to raise awareness of World Elder Abuse Awareness Day and to raise money to help continue Age UK, Solihull's' work with older people, and in particular to be the voice for those who are victims of abuse.



Age UK Solihull's positive work they undertook this year included a [JustGiving Campaign page](#) for supporters to donate online, directly contacting 94 care organisations with statistics on elder abuse and information about WEAAD to raise awareness and promote the day, they shared information through their social media platform and with local businesses to 'wear purple' and donate.

This year Age UK Solihull were able to have a presence in the community and had a stand at Solihull Retail Park. This is something they haven't been able to do for a number of years, due to the pandemic. The team gave out information on safeguarding, they had a purple chocolate tombola and gave out purple-themed quizzes.

The total raised was £191 with some monies still being expected!

Multi-Agency Risk Management Guidance

This guidance has been developed by Solihull Safeguarding Adults Board to help those working with adults who have complex needs and unmanaged risks. Professionals may also be struggling to engage the person and it is felt a multi-agency risk management approach is needed to safeguard and promote their wellbeing.

It sets out how partners should work together – sometimes referred to as complex discharge meetings, professionals’ meetings or multi agency meetings.

[Find the guidance on our website](#)

Multi-Agency Risk Management Guidance for Professionals



Safeguarding Practice Learning Forum

Every 3 months Adults and Childrens practitioners come together at a Safeguarding Practice Learning Forum to:

- Discuss current topics to raise awareness of local and national developments and good practice.
- Share directly with practitioners the current Solihull Safeguarding Adults Board (SSAB)/Solihull Safeguarding Children Partnership (SSCP) learning and training provision, highlighting priorities for SSAB & the SSCP
- Provide a 2-way consultation process for the SSCP/SSAB to hear directly from frontline practitioners while also sharing current learning.



The next forum is on **Tuesday 26th September 2023; 2:00pm to 4:00pm** – at The Loft, Blue Bell Centre, West Mall, Chelmsley Wood, Solihull, B37 5TN.

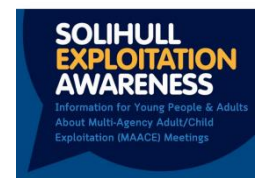
[Book your place via Eventbrite.](#)

Multi-Agency Adult/Child Exploitation Meetings (MAACE) Leaflet

This leaflet has been designed for young people, adults and their families to explain what exploitation is, what the MAACE process involves, and what to expect in terms of support from professionals.

[Find the leaflet on our website](#)

#SAY something if you SEE something Solihull



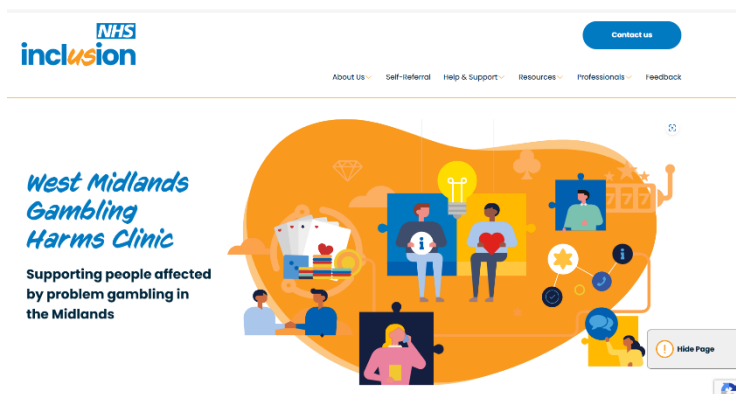
West Midlands Gambling Harms Clinic

Providing specialist addiction therapies, treatment, and recovery

The NHS West Midlands Gambling Harms Clinic (also known as the Midlands Gambling Clinic) provides specialist addiction therapies, treatment, and recovery to those affected by gambling addiction and gambling problems.

Many people take part in some form of gambling. For some, this can be an enjoyable activity, but for others, gambling can harm an individual's physical and mental health, relationships and performance at work, and can leave them in serious debt too. Gambling can also have a huge impact on people close to those with an addiction, which is why we offer tools, support and resources for family members, carers, partners, friends and work colleagues.

Find out more information on their dedicated website: [Homepage - Gambling Harms \(midlandsgamblingclinic.org\)](https://midlandsgamblingclinic.org)



Safe Care at Home Review

During the passage of the Domestic Abuse Act 2021, evidence was presented by peers and the deaf and disability sector on abuse against people receiving care in their own homes. In response, the government decided to review the existing protections and support for adults with care and support needs who are at risk of, or experiencing, abuse in their own homes by people providing their care. The Safe Care at Home Review was jointly led by the Home Office and Department of Health and Social Care (DHSC). The review drew on the experience of people who receive care in their own homes, organisations representing carers, and statutory agencies including frontline professionals.



The review developed a set of cross-government actions for implementing change over 3 key themes:

- Strengthening accountability and oversight mechanisms to better protect and support victims.
- Strengthening training and guidance so this type of harm and relevant legislative protections are better understood by frontline professionals.
- Improving the data and evidence available about this type of harm.

Find out more in the full report: [Safe Care at Home full report](#)

As One Door Closes

Written in partnership with specialist researchers We Fight Fraud, the report presents a candid new insight into the nature of this symptom of financial exclusion based on rare access to both illegal lenders and nearly 300 people using them in Port Talbot, Preston, Glasgow and South London.



While users of illegal money lenders generally borrowed hundreds rather than thousands of pounds at a time, the total amount of debt per borrower was significant at around £3,000 on average. Repayment rates were different but invariably involved paying double. However, a lack of transparency or awareness of the total cost of credit was commonly reported.

Researchers found that although actual violence was rare, the pervasive threat of it along with coercive control tactics were common. Researchers detected a resignation to the idea of resorting to an illegal lender, as reflected by just 1% of customers in the research reporting their situation to illegal moneylending teams around the UK.

The research suggests illegal lenders are flourishing in the credit vacuum left by the departure of high cost yet regulated lenders. The unintended consequence is that millions of people who can well afford to repay a fair loan are left with fewer safe options.

Find out more in the full report: [As One Door Closes full report](#)

EQUALITY, DIVERSITY & INCLUSION

LGBTQ+ Care in Later Life – A Learning Framework

This learning framework for working with LGBTQ+ people in later life aims to provide a base for identifying the insights, knowledge, understanding and skills that the social care workforce need to help them work affirmatively, inclusively, and effectively with individuals from gender and sexually diverse communities. This project was funded by Skills for Care and was developed by Dr Trish Hafford-Letchfield (University of Strathclyde) in collaboration with the LGBT Foundation.

The framework includes a background on LGBTQ+ issues and awareness; a look at health and wellbeing issues later in life, including research about LGBTQ+ inequalities; information on providing personalised care and support covering topics of intersectionality, supporting people with dementia or HIV, and understanding intimacy and sexuality later in life; and recommendations for leadership, education, and service development to continue to improve care and support in this area.



How it can be used:

The framework is intended to be used by social care employers, employees, training providers, regulator, commissioners, policy makers and others to build their own knowledge of LGBTQ+ issues, to support colleagues' understanding, and to create learning programmes which will allow teams to better support LGBTQ+ people in later life.

The framework will support social care services and organisations to:

- include LGBTQ+ issues in the education and training of the workforce.
- include LGBTQ+ issues in the everyday care and support of people in later life.
- guide the aims and focus of LGBTQ+ education and training based on evidence.
- conduct a training needs analysis and design training which meets a minimum standard of performance and capability in its assessment and provision of care to LGBTQ+ individuals in later life and their communities.
- embed the relevant topics, areas, guidance and learning resources into its recruitment, induction, supervision, appraisal, and career progression processes.

[Click here to read the LGBTQ+ Care in Later Life Framework](#)

LEARNING AND DEVELOPMENT

SSAB Training (September – October)

Course: Mental Capacity Act & Best Interest Decision Making
Date/Time: Tuesday 12th September - 10:00am to 1:00pm
Trainer: David Gell
Delivery: Online, via Zoom
Book your place: [Mental Capacity Act & Best Interest Decision Making Registration, Tue 12 Sep 2023 at 10:00 | Eventbrite](#)

Course: Making Safeguarding Personal
Date/Time: Tuesday 19th September - 10:00am to 1:00pm
Trainer: David Gell
Delivery: Online, via Zoom
Book your place: [Making Safeguarding Personal Registration, Tue 19 Sep 2023 at 10:00 | Eventbrite](#)

Course: Working with People that Self-Neglect
Date/Time: Tuesday 10th October 2023
Trainer: David Gell
Delivery: Online, via Zoom
Book your place: [Working with People that Self-Neglect Registration, Tue 10 Oct 2023 at 10:00 | Eventbrite](#)

Course: Self-Neglect and Mental Capacity Act
Date/Time: Thursday 26th October - 9:30am to 4:00pm
Trainer: [Edge](#)
Delivery: Online, via Zoom
Book your place: [Self-Neglect & Mental Capacity Act Registration, Thu 26 Oct 2023 at 09:30 | Eventbrite](#)

Including Contextual Safeguarding in Individual Assessments

This session, delivered by [Solihull Safeguarding Children Partnership](#), is aimed at those who undertake assessments which are holistic in nature – taking into account both the context of children’s experiences within their family home and in other social spaces. To enable practitioners to consider how children and young people experience the environments they navigate in their daily lives and the risks they may face in these contexts.



By participating in this training you will:

- Assess the risk of extra familial harm to a child / young person.
- Consider the needs of a child / young person subject to extra-familial risk.
- Make recommendations / plan for on-going work which addresses extra-familial risk of harm.

Date: Wednesday 13th September 2023

Time: 9:30am to 1:00pm

Venue: Sans Souci, Tanworth Lane, Solihull, B90 4DD

Book: [Book your place via SSCP Training](#)

Hourglass Webinars

Throughout 2023, [Hourglass](#) is hosting free webinars each month in collaboration with partners, each one focusing on a different area around the abuse of older people.

They are sharing specialist knowledge, provoking insightful discussion and asking panellists to offer their viewpoints on how we can prevent and stop the abuse of older people and work towards safer ageing.

The next webinar is ‘**30 years fighting the abuse of older people**’. Taking place on Thursday 28th September; 10:00am to 11:30am.

[Book your place on the next webinar via Eventbrite.](#)

[Click here for a full list of the webinars scheduled up to January 2024](#)



An Hourglass Webinar
Thursday 28th September | 10am - 11:30am



Learning from Domestic Homicide Reviews Training

The West Midlands Office of the Police and Crime Commissioner (OPCC) and Birmingham Community Safety Partnership has commissioned Richmond Fellowship to deliver a regional Learning from Domestic Homicide Reviews training offer across the West Midlands seven Local Authority areas for multi-agency professionals.



west midlands
police and crime
commissioner



BIRMINGHAM COMMUNITY
SAFETY PARTNERSHIP
WORKING TOGETHER FOR A SAFER CITY



The training is committed to sharing important learning and recommendations from DHR's with a view to inform and change guidance and practice amongst professional networks, including identifying earlier opportunities to intervene, to reduce the risk of harm to victims and their families, manage perpetrators harmful behaviour and share information about agencies and services that can assist.

Each session is a half day course. See dates and times below and use the Eventbrite link to book your place. [Click here for full information about the course.](#)

Date	Time	Delivery	Link to Book
Thursday 24 th August	9:30am – 1:30pm	Online, via Teams	Thu 24 Aug 2023 - Eventbrite
Tuesday 29 th August	9:30am – 1:30pm	Face-to-Face, at 10 Woodcock Street, Birmingham, B7 4BL	Tue 29 Aug 2023 - Eventbrite
Wednesday 6 th September	9:30am – 1:30pm	Online, via Teams	Wed 6 Sep 2023 - Eventbrite
Tuesday 12 th September	9:30am – 1:30pm	Online, via Teams	Tue 12 Sep 2023 - Eventbrite
Monday 18 th September	12:00pm – 4:00pm	Face-to-Face, at 10 Woodcock Street, Birmingham, B7 4BL	Mon 18 Sep 2023 - Eventbrite
Monday 25 th September	12:00pm – 4:00pm	Online, via Teams	Mon 25 Sep 2023 - Eventbrite
Thursday 28 th September	9:30am – 1:30pm	Online, via Teams	Thu 28 Sep 2023 - Eventbrite
Tuesday 3 rd October	9:30am – 1:30pm	Online, via Teams	Tue 3 Oct 2023 - Eventbrite
Monday 9 th October	12:00pm – 4:00pm	Online, via Teams	Mon 9 Oct 2023 - Eventbrite

MAKING SAFEGUARDING PERSONAL

Safeguarding Adults Week (Monday 20th – Friday 24th November)

Safeguarding Adults Week is a national campaign coordinated by the Ann Craft Trust and is held every November.

The aim is to highlight key safeguarding issues, start conversations and raise awareness of safeguarding best practice. Each day will focus on a different safeguarding theme which relates to how individuals and organisations can safeguard themselves and others.



SSAB will be working with SMBC on some learning and development events, more information will be shared closer to the time.

[Click here to find out more about Safeguarding Adults Week](#)

Discriminatory Abuse Resources

Developing Practice Responses Podcast

This podcast explores what discriminatory abuse is and considers official statistics and wider research findings. It discusses how we can recognise potential discriminatory abuse, how discriminatory abuse features in Safeguarding Adult Reviews and what this means for developing our practice.

[Click here to listen to 'Discriminatory Abuse - Developing Practice Responses' by Research in Practice](#)



Self-Assessment Tool: Safeguarding Adults

This self-assessment tool is a practical tool to promote the making of connections between the experiences of discriminatory abuse and adult safeguarding so that safeguarding teams, Adult Social Care, Safeguarding Adult Boards and their partners can be the change and generate understanding. Regardless of methodologies or tools employed there is an urgency to address an overlooked abuse type in adult safeguarding.



This tool sets out what local authorities are required to do and allows them to measure their progress against three levels: developing; achieving; and excelling.

[Click here to find out more about the self-assessment tool](#)

BOARD & SUB-COMMITTEE NEWS

The Board's priorities for 2023-24 are:

1. **To improve our understanding of who Solihull's communities are and use this to improve the accessibility and quality of safeguarding information as well as service development.**
2. **To understand from Solihull's communities and those with lived experience of safeguarding, what they need from an effective safeguarding response and act on this.**
3. **A robust response to financial abuse.**

Safeguarding Adults Board Meeting

At our meeting on 1st June 23 we received an annual update from CQC, we received our first annual update from SMBC Housing and Homelessness Lead on Solihull/s response to homelessness, we received an update on the work happening across a number of boards to improve coordination and joint working, this work is making good progress. We discussed a new approach to undertaking Safeguarding Adult Reviews – SARs in Rapid Time – developed by SCIE to support getting the learning from cases in a timelier manner. The Board also discussed a report pulling together the impact of learning from Solihull SARs.

Next Board meeting is 7th September 2023

Safeguarding Adults Review Sub-Committee

At our meeting on 17th May we agreed to develop a practice briefing on the learning from a case we have called "Sam", we also agreed some actions for the subcommittee to support the Board's priorities. We considered a new approach to SARs called SARs in Rapid Time and considered how we could use this approach. We also considered the impact of the Stephen SAR recommendations, implemented in 2021, and we reviewed local data on SARs looking at the demographics of the individuals and considered what this was telling us.

Next meeting is 8th August 2023

Engagement & Prevention Sub-Committee

At our meeting on 18th July, we received updates on World Elder Abuse Awareness Day, there was agreement of a refreshed multi-agency risk management guidance to support agencies where concerns of risk are identified, and the group received an animation video exploring Domestic abuse & older people, which encourages individuals to seek help. The group considered the findings from a deep dive audit undertaken by the PQ&A subcommittee partners and there was a discussion about what reps are hearing from the community in relation to safeguarding support and financial abuse. Some key questions were shared with partners, to consider what good safeguarding intervention looks like for the community and where they would most likely seek support; we look forward to hearing the feedback in due course.

Next meeting is 24th October 2023

Learning & Improvement Sub-Committee

At our meeting on 13th July, the group considered the learning and recommendations from the self-neglect deep dive audit report and the Domestic Abuse Assurance Summary. We considered how attendance at Domestic abuse training can be improved. The group discussed financial abuse and what type of concerns partners are hearing from their organisations. The group received information about cultural competence and agreed to a survey to understand the knowledge of practitioners which will in turn, support training and resource needs. The group considered the SSAB website analytics and reviewed the risk register. The group received information about the new priority on financial abuse.

Next meeting is 12th October 2023

Policies & Procedures Sub-Committee

At our meeting on 4th July we agreed a refreshed version of the multi agency risk management guidance, we also agreed a refreshed version of our guidance on digital technology and staying safe online, we agreed to review our financial abuse guidance to support our focus on responding to financial abuse this year, we also discussed and agreed to share two useful reports which are included in this newsletter – Safe Care at Home Review and LGBTQ+ care in later life learning framework.

Next meeting is 3rd October 2023

Performance, Quality & Audit Sub-Committee

At our meeting on 27th July, the group received a summary of the key findings from the Safeguarding Performance Dashboard. The group considered the learning & recommendations from a number of audits; including the single agency audit on Making Safeguarding Personal, the Domestic Abuse Assurance Summary, the Care Act Compliance summary report and the self-neglect deep dive audit report. We reviewed the risk register and the group agreed to reduce the risk in relation to MSP. The group received information about the new priority on financial abuse and received an update of the progress of the workplan.

Next meeting is 2nd November 2023



Sue Ross
SSAB Independent Chair



Rachel Swain
SSAB Business Manager
rachel.swain@solihull.gov.uk
Tel: 0121 788 4376



Kirti Mistry
SSAB Performance & Development Lead
kirti.mistry@solihull.gov.uk
Tel: 0121 704 7491



Demi Williams
SSAB Management Assistant
demi.williams@solihull.gov.uk
Tel: 0121 788 4387



Rhys Cartwright
SSAB Administrator
rhys.cartwright@solihull.gov.uk
Tel: 0121 788 4390

West Midlands Adult Safeguarding Policy & Procedures

Adult Safeguarding: Multi-Agency Policy and Procedures for the protection of adults with care and support needs in the West Midlands --- [Click here to view the Procedures](#)

To Report Abuse

Tel: **0121 704 8007** (Office Hours)
Tel: **0121 605 6060** (Out of Hours)
Tel: **101** – Police (Call **999** in an emergency)

Safeguarding Referral Form

Public - [Find the details on our website](#)
Professionals - [Click here to make a referral to SMBC Adult Social Care](#)